

## **Historic, Archive Document**

Do not assume content reflects current scientific knowledge, policies, or practices.





02.07  
COLE'S 1946

LIBRARY  
RECEIVED  
★ FEB 14 1946 ★  
U S Department of Agriculture

# GUIDE to MODERN GARDENING



*Mirandy*

AN ALL-AMERICA  
HYBRID TEA ROSE  
(See next page)

600 Acres  
of Everything that's  
Good and Hardy

*The*  
**COLE NURSERY  
CO.**

1881 Painesville, Ohio 1946



# Cole Presents ~

## THE FINEST IN HARDY PLANTS—THE BEST OF THE NEW ONES—As well as a fine selection of "Old Faithfuls"

Since 1881 The Cole Nursery Company has taken pride in offering you the very finest plant material. The experience of the 65 years of plant growing and development go with everything you purchase from us. The beauty of many gardens, throughout America, is founded on the reliability and quality of Cole-grown plants. Our policy of satisfying every customer assures your gardening success. You are cordially invited to inspect our nurseries at our new home located on West Jackson Street, one-half mile north of Route 20 and 2 miles west of Painesville, Ohio.

*"Everything that's Good and Hardy"*



### VIOLA, CATHERINE SHARP

(Viola cornuta)

For many years plant growers all over the United States have been trying to develop a tufted Pansy that was thoroughly hardy and yet would bear a profusion of well-colored flowers. In the Catherine Sharp all these desirable characteristics have been attained. We have seen this plant for 3 years, now, withstanding all types of winter weather and coming back in the spring and throughout the summer with a profusion of glorious lavender-blue flowers that are about the size of the former garden favorite, Jersey Gem. This will bloom well in light shade and is not too particular as to soil. The lovely yellow eye adds further sparkle to its beauty. 65c each; \$1.65 for 3; \$5.00 for 10.

### Hybrid Tea ROSE, MIRANDY

All-America Selection

(Plant Patent No. 632)

Illustrated on front cover.

Deep red flowers, having the texture and pile of good velvet and a delicious spicy fragrance, borne on long sturdy stems. The large ovoid buds open to fully double, many-petaled flowers that are fine for cutting, lasting much longer than average indoors.

The foliage is heavy and leathery, and of a lustrous dark green which does not fade or drop easily.

The plant is upright, vigorous, and free blooming.

Altogether, this is the finest Rose we have seen. We highly recommend it. \$2.50 each; \$6.25 for 3.

### Our Guarantee

All plants must reach our customers in perfect condition.

If there is any doubt as to their health and vigor, please notify us **AT ONCE**. Also, please notify the shipping agent—postman, expressman or freight agent—**AT ONCE**—showing him the damages. Packages are often delayed in shipping and this is the carrier's responsibility. Claims for damages must be made by the party receiving the plants promptly. We, however, will not let the customer be the loser and, if notified before 10 days have passed, will replace free of charge any plants not in the best of condition when received, whether or not the delivering agent allows the claim.

We will also replace at one-half (1/2) the listed price, any plant bought at listed price that fails to grow the season following shipment. Reports must be made before August 1st following planting date.

Plants and other nursery stock sent as ordered, and received in good condition, cannot be returned for credit and we accept no obligation for their return.

Unless you state definitely "NO SUBSTITUTION", we retain the right to send you a similar plant of equal value in place of the variety you order. When substituting, we always endeavor to give the customer the best of the deal.

### How to Order

Payment in full should be sent with all orders. No C. O. D. orders accepted. Send money by recognized safe methods. Unregistered cash sent at your risk.

**Packing.** All stock will be packed free, using the most modern methods, assuring perfect arrival.

**SHIPPING.** Please add 5% to all orders which you wish shipped by parcel post so that we may prepay them, 10c minimum. The usual material that is shipped by parcel post includes roses, perennials, vines, and some of the small fruits. All other material will be sent express charges collect.

### Items Not Listed

We were able to locate paper to publish a Green Book in 1945 and we will have some of these available in the event we are unable to publish a new one this year. If we are able to get the paper, we will issue a new one, however. Many things listed in our color catalog will also be found in the Green Book, which includes practically everything we have on the nursery. If our supply is exhausted when we receive your request, send us your list for quotations.

### OHIO CUSTOMERS

Please include the usual 3% sales tax with your remittance, except in the case of fruit trees and fruit plants, which are exempt.

*In the hustle and battle of business,  
With its saving and slaving and grind,  
We're too apt to credit successes  
To the work of our own hand and mind.  
But we pause on this special occasion  
To give credit where credit is due,  
To thankfully say that our progress results  
From the friendship of such folks as you.*

### PLANTING INSTRUCTIONS

Due to wartime paper restrictions, we were unable to send planting instructions to all our customers in 1945. If these conditions relax, we will send them this spring. In the meantime, we will try to give general instructions at the beginning of each classification.



# Cole's HARDY PERENNIALS

## For Spring Shipment Only.

Wide color range, varied flower form, and differing growth habits earn for hardy perennials the title, "Mainstays of the Garden." Much of their popularity is due to the fact that they will bloom year after year with a minimum of care. We list only the cream of the newest and finest of the older types. We will ship the type of plant we consider best for transplanting, these being in some cases pot plants and in others field-grown clumps or divisions.

**CULTURAL HINTS: Never bury hardy perennials as this will assure their loss.** As a rule, they prefer a well-drained, loamy soil that is either neutral or slightly alkaline (sweet). Always plant at the depth they have previously grown. Be sure the soil is well prepared. Well-rotted manure or bone meal, well mixed with the soil is advantageous. Never allow any "commercial" fertilizer to come into direct contact with any part of the plant.



**Bleedingheart Spectabilis**

### BLEEDINGHEART

**Eximia.** (The Fringed Bleedingheart.) Dainty, rose-pink flowers in drooping racemes. Finely cut, fernlike foliage. May through August. Full shade or sun. 15 inches. 45c each; \$1.20 for 3; \$3.50 for 10.

**Spectabilis.** This fine old favorite is more popular today than ever. Its long racemes of truly heart-shaped flowers with their little pendants lend a romantic touch to any garden. Grows 24 inches high. Plant 18 to 24 inches apart in shade or sun, in moist, rich soil. Valuable for planting in clumps. 65c each; \$1.65 for 3; \$5.00 for 10.



**GIANT BLUE MOON**

One of the handsomest new introductions. The immense, blue, disclike flowers, borne on sturdy 12- to 18-inch stems, are 4 to 6 inches across. Don't miss this vigorous, free-flowering variety. It blooms all summer and fall till frosts top it. 12 to 18 inches. 60c each; \$1.50 for 3; \$4.50 for 10.

### ARMERIA

Oftimes called "Thrift" and the name is surely appropriate. These dainty plants seem to be able to get the most from even poor soil and then burst forth into a dazzle of glowing pink bloom that catches the eye in any location. Compact, inch-wide flower heads on 8-inch stems cover the plant at the heavy blooming season and present a jewel-like appearance for the balance of the summer with intermittent flowers. Handsome, finely cut foliage. Valuable in the border or rockery. Lovely in small bouquets. 45c each; \$1.20 for 3; \$3.50 for 10.



**Armeria**

## A COLE SUPER SPECIAL

### Your complete perennial garden—

100 of the finest plants selected by us from those in this catalog. A veritable rainbow of colors. Tall for background, etc. **Remember—100 sturdy plants, at least 25 or more kinds for \$37.50; over \$50 value. 200 plants for \$70.00; over \$100 value.**

## The Best New HARDY ASTERS

(Michaelmas Daisies)

Beautiful summer and autumn-blooming perennials that produce an immense show of flowers suitable for cutting. Patient hybridizing has resulted in exotic sizes and hues.

**Beechwood Challenger.** The closest to a pure crimson-red of any Aster we have yet seen. 2½ ft. 50c each; \$1.35 for 3.

**Blue Gown.** Large, delightful, china-blue flowers. A tall, pyramidal specimen. 4 ft. 50c each; \$1.35 for 3.

**Harrington's Pink.** The first truly pink Aster. Proclaimed from ocean to ocean for its color and profusion of bloom. 4 feet. 60c each; \$1.50 for 3.

**Mount Everest.** A mountain of pure snowy white bloom. Flowers are produced right down to the ground on tall, well-shaped plants. The supreme white Aster. 4 feet. 50c each; \$1.35 for 3.

**Palmyra.** A new and most interesting Aster. Extremely hardy, a vigorous grower, medium height, bearing delightful pure pink, semi-double flowers in perfect pyramid. Plant compact and bushy, flowers open simultaneously, making it an excellent cut flower. 2½ to 3 feet. 50c each; \$1.35 for 3.

**Queen Mary.** Graceful 2½-inch flowers artistically arranged in branching panicles on strong, sturdy, upright stems to 3½ feet high. The color is a particularly pleasing blue-tinted lavender. 60c each; \$1.50 for 3.

**Royal Blue.** The deep, rich blue so much desired in the garden. This is a strong grower producing enormous quantities of flowers. 3½ ft. 60c each; \$1.50 for 3.

**Sunset.** Here is one of the really finest rosy-pink flowered Asters. The tall, stately plants, which reach an approximate height of 2½ ft., are thickly covered with the large, handsome flowers in the late summer and fall. This grand variety is sometimes used as an informal hedge, the plants submitting well to trimming to a hedgelike group and still furnishing a maximum of fall color. 50c each; \$1.35 for 3; \$4.00 for 10.

## A COLE SUPER SPECIAL

**8 Finest Fall Asters**  
1 each of those listed.  
Value \$4.30—Special \$3.60



**Hardy Aster, Royal Blue**



# Cole's Modern

Our 1946 Chrysanthemum list is a result of our annual selection of those varieties best adapted to garden culture, both as to growth of plant and quality of flower. Each year in our list you will find a few new ones and miss some of the old ones. This is because we are constantly on the lookout for varieties that will be more and more satisfactory to our customers. We feel that our list is comprised of plants that will please any person who desires a Mum garden. They may be used in masses or as individual specimens planted in the border. The Cushion Pompons work very nicely as edging on the border. Where a show of flowers is desired, there is nothing quite like the Chrysanthemums.

**Algonquin.** A U. S. D. A. introduction. Extremely hardy. One of the earliest Mums to bloom in our fields. Very showy, double, brilliant yellow, three inches across. A grand variety in full bloom by September 10th. 1½ feet. 50c each; \$1.35 for 3.

**Autumn Lights.** A magnificent coppery bronze with gleaming orange overcast. The compact plant is completely hidden by the dazzling bloom. Unusually hardy. Late September. 1½ feet. 40c each; \$1.05 for 3.

**Burgundy.** Great double flowers of brilliant cerise to crimson. A very rare color is this glorious wine-red, and it puts on a grand show in early October. 2½ feet. 40c each; \$1.05 for 3.

**Cydonia.** Brilliant orange-mahogany flowers, fully double, truly are outstanding. Fine, brightly colored sprays on erect, strong-stemmed plants. 2 feet. 40c each; \$1.05 for 3.

**Dahlia Flower.** Different from any other Chrysanthemum on the market. Flowers are very much like the Cactus Dahlia or Spoon Chrysanthemum, but are much more compact. The bloom is an almost indescribable deep, rich red. Blooms prolifically from mid-September until frost and is certainly a "knock-out" in bouquets. 40c each; \$1.05 for 3.

**Eugene A. Wander.** A big hardy Mum of brilliant, glistening, golden yellow. Perfectly formed double flowers 4½ to 5 inches across. Branching habit; vigorous grower. In full dazzling bloom by September 15th. 50c each; \$1.35 for 3.

**JEWEL TYPES.** Here is a new race of Chrysanthemums, being exceptionally hardy and having a sturdy upright growth to about 18 inches and producing literally hundreds of glistening, pompon-like flowers, borne like jewels on their sturdy, erect stems. A fine keeper in the bouquet and certainly a lovely sight in the garden. The colors are pure and clear, and a welcome addition to the Chrysanthemum family. We offer them in three colors:

**Purple.** A true purple.

**White.** A snowy-white.

**Yellow.** A good buttery yellow.

50c each; \$1.35 for 3.

1 of each for \$1.35.

**Kristina.** This is one of the Northland Daisies having all the characteristic hardiness and beauty of foliage. The sturdy, 12-inch stems, are surmounted by clusters of single, long-petalled rosy pink flowers with a delightful golden yellow center. They are very free-blooming and will delight any gardener. Plant a few of these as an accent. Other colors will provide a pleasing contrast. 50c each; \$1.35 for 3.

**Lavender Lady.** One of the loveliest of all. Mammoth double flowers of true lavender. A strong, free-flowering hardy plant without a fault. Has full branching habits. Truly a headliner. Early October. 2½ feet. 40c each; \$1.05 for 3.

**Lavender Lassie.** A miniature reproduction of the ever-popular Lavender Lady in the Cushion Pompon type. Its fully double flowers, 2 inches in diameter, are the same lovely color as Lavender Lady. The plants, 2 feet high, and often 3 feet across, are simply smothered with these fascinating double pompon flowers. Late September. 50c each; \$1.35 for 3.

**Little Bill.** Our own 1945 introduction, finer than ever in 1946. We think this is the very finest of the new Cushion Pompon type Mums. The prevailing color is a lovely old gold and bronze, plentifully shot and overcast with silver. The entire effect is that of a 12-inch mound, 18 inches across, studded with a myriad of flashing jewels. The flowers hold well, showing no signs of fading whatsoever, until they are completely through blooming. No garden is complete without several of these. We think it one of the finest introductions of recent years. 85c each; \$2.25 for 3.

**Mme. Chiang Kai-Shek.** (Patent pending.) Best New Mum. Beautifully formed flowers, fully double, with hosts of sturdy petals that withstand all types of bad weather. One of the finest Chrysanthemums in the country. A glorious plant showing full flower in September with sometimes a hint in late August. Extremely vigorous and hardy. \$1.00 each; \$2.50 for 3.

**Pomponette.** New. Magnificent masses of brilliant Tyrolean yellow overcast gently with golden bronze. This variety has eye appeal, cutting qualities, and sturdy growth that make it outstanding. Mid-September to frost. 1½ feet. 60c each; \$1.50 for 3.



Autumn Lights

Dahlia Flower

Yellow Jewel

Algonquin

Sequoia

Burgundy

## A COLE SUPER SPECIAL

1 Each of the 6 Lovely Mums

Pictured Above

Value \$2.95—All for Only \$2.50



# CHRYSANTHEMUMS

**Red Velvet.** New. A glorious new crimson whose beauty surpasses any description. The shapely flowers are carried on graceful, erect stems furnished with healthy, dark foliage right down to the ground. The color is an unfading velvety crimson. The lustrous foliage makes the plant itself a thing of beauty even before flowering. 2 feet. Early October. 60c each; \$1.50 for 3.

**Ruby Pompon.** New. A rich, glowing ruby-crimson. A color you need in the group of useful Pompons. No Mum surpasses it in its profusion of pulse-quickenning color. Add Ruby Pompon to your list now. 2 feet. Early October. 60c each; \$1.50 for 3.

**Sensation.** Another of the hardy Northland Daisies. Plant sturdy, well-foliaged. Clusters of sensation-ally blended bronze-orange-yellow-red flowers are borne erect on 15-inch stems. This plant will be a sensation in your garden, either as a specimen or in mass planting. 50c each; \$1.35 for 3.

**Sequoia.** This is one of the new Korean Hybrids producing a profusion of good sized golden amber flowers on strong, sturdy, 20- to 24-inch stems. This is one of the finest cutting Mums on our list. 75c each; \$2.00 for 3.

**Cole's Famous "Cactinum," Sun Gold.** A great beauty, an asset to any garden. Large, compact, pure golden yellow flowers, 5 inches across, with petals, slightly quilled at the ends. Last 10 days to 2 weeks when cut. Very hardy. Late October. 2 to 2½ feet. 60c each; \$1.50 for 3.

**Torch.** New Novelty Mum. Daring, semi-double, orange-scarlet flowers with golden reverse that defies description. A stand-out in the garden and very fine for cutting. If we had a picture, everyone would buy six plants. You'll never regret taking our word and buying three of these splendid Mums. Very hardy. 60c each; \$1.50 for 3.

**The Chief.** This produces a great quantity of large, semi-double bright scarlet and gold flowers. Of very rugged growth habits with highly attractive, lush green foliage. One of the most attractive Mums in our field and an excellent subject for cutting. 60c each; \$1.50 for 3.

**Viking.** Another one of the extremely hardy Korean Hybrids. The large, double flowers are of a color that is almost indescribable—or rather a combination of colors. They carry all the shades of gold, deep, velvety crimson, bronze, and blood-red. Fine for the garden and unusually fine for cutting as both foliage and flower hold up very well when cut. 75c each; \$2.00 for 3.

**White Doty.** The supreme white Pompon. A pure, unchanging white that outlasts all other Chrysanthemums. A treasure. 40c each; \$1.05 for 3.

**White Knight.** The need for a good, large, double white has long been felt. Here is a big, fluffy white Mum that fills the need perfectly. A profusion of double, 3-inch blooms, glistening on a sturdy, upright bush. Begins in mid-September and lasts until frost. 60c each; \$1.50 for 3.



Lavender Lady

## A COLE SUPER SPECIAL

### Cole's Justly Famous "Riot of Color" Chrysanthemum Collection"

1 each of 6 of our finest Chrysanthemums—all types, all colors—including our famous Cactinum Sun Gold—all individually labeled.

Value \$2.70 Special \$1.85

## A COLE SUPER SPECIAL

### Ultra-Modern Chrysanthemums

1 Lavender Lassie 1 Pomponette  
1 Little Bill 1 Red Velvet  
1 Ruby Pompon

Value \$3.15 Special \$2.40

## New Cushion Pompons

## SPOON MUMS

Delightfully different! Nothing in our gardens has excited as much comment as this distinct new range of uniquely formed Mums, having graceful petals of tubular shape flattened at the tips to resemble a spoon. We have selected three of the newest varieties which carried sufficient appeal and merit to pass our rigid requirements. Be the first in your neighborhood to display this group of unusual novelties.

**Golden.** A clear, glowing old gold. Compact flower form.

**Orchid.** Mammoth flowers of a clear orchid-pink.

**Rose.** The warm, shining color of the American Beauty Rose.

Prices above novel Spoons: 60c each; \$1.50 for 3.  
1 of each for \$1.50.



Bronze-Gold

This is a new group of Mums that grow in the shape of the famous Cushion or Azalea-mums and have the extremely useful and well formed bloom of the Pompon Chrysanthemums. All produce enormous sprays of 1½-inch flowers on mound-shaped plants 18 inches high and even wider.

**September Bronze.** The warm gold-bronze tints of autumn.

**September Cloud.** Purest ivory-white with soft primrose shading at center.

**September Gold.** Vibrant golden yellow flowers, trim and neat.

Prices of the above  
3 New Pompons:  
50c each; \$1.35 for 3.

## CUSHION MUMS

Low-growing mounds of profuse bloom. Plants grow 10 to 12 inches high and spread 2 feet or more, and are completely blanketed with hundreds of flowers from September till frost. Don't forget to include several of these little beauties with your order. They may be used in front of evergreens to add fall color, in the perennial border, or where extreme hardiness is necessary.



Santa Claus

**Amelia.** The famous Pink Cushion.  
**Hector.** Pure brilliant golden yellow.  
**King.** Coppery bronze to dull red.  
**Queen.** Silvery white.

Prices of above 4 Cushion Mums: 40c each;  
\$1.05 for 3; \$3.25 for 10.

**Bronze-Gold.** Newest brilliant Cushion Mum. Entirely distinct from other Cushion types in its most desirable flowering habit. A fluffy, gorgeous mass of gold tinted with bronze from mid-September until the season ends. Grows 2 feet tall and up to 3 feet wide. A grand bit of color. 65c each; \$1.65 for 3.

**Santa Claus.** The new, superior red Cushion Mum. Grows slightly taller than the common Cushion Mum, but in a broad mound bearing hundreds of brilliant, rich red blooms. Flowers are large, 2½ inches across, completely double. Striking example of horticultural development. Early October. 60c each; \$1.50 for 3.

## A COLE SUPER SPECIAL

6 CUSHION MUMS  
1 each: Amelia, King, Queen and Hector,  
plus Santa Claus and Bronze-Gold.  
Value \$2.85 SPECIAL \$2.30



September Bronze



# The Finest CAMPANULAS

**Double Blue Gardenia.** Glistening china-blue flowers on stately, erect stems. The extra large, completely double flowers, in magnificent profusion, are a picture no one forgets when they are in bloom. A great improvement over the common variety, they are a perennial that will live for years, blooming gloriously. Plant a group of these in the background of your garden. You will really take pride in Blue Gardenia. May and June. 2½ feet. 75c each; \$2.00 for 3; \$6.00 for 10.

**Telham Beauty.** This is probably the finest of the single Persicifolia types of Campanula. The gorgeous blue, bell-shaped flowers are born on stems 2 to 2½ feet tall. The flowers last well after cutting and are truly a marvelous sight in the garden. This has been a standby with choosy gardeners for many years and should be in every perennial border. 60c each; \$1.50 for 3; \$4.25 for 10.

**Bluebells of Scotland.** Delicate, clear blue flowers born on slender stems, about 1 foot in length. When mature these plants make a dense foliage carpet and from June through August are literally covered with the dainty blossoms. The plants may be used in crevices in rock walls and rock gardens, on steep slopes, and well in the forward part of the perennial garden or border. Will grow equally well in full sun or partial shade. 50c each; \$4.35 for 3; \$4.00 for 10.

## A COLE SUPER SPECIAL

1 each of these lovely Campanulas

Total of 3 Plants

Value \$1.85 Special \$1.55



Bluebells of Scotland

## ANEMONE

**Hupehensis Superba.** A new hybrid with the size of Japonica and the free-blooming habit and color of the Hupehensis. Flowers are reddish pink outside, deep rose-pink inside. Blooms freely September to frost. 2 feet. 50c each; \$1.35 for 3.

**Double Anemone.** 2 feet.  
**Queen Charlotte.** Perfect flowers of enchanting La-France-pink. 50c each; \$1.35 for 3.

**Whirlwind.** Large double white flowers of excellent form. 50c each; \$1.35 for 3.

## A COLE SUPER SPECIAL

1 each 3 Beautiful Anemones as listed above.

Value \$1.50 Special \$1.35



Anemone

## COLUMBINE

Here we present what we think is the acme of all the Columbines. The listed varieties lead in hardiness, profusion of flowers, color combinations and shades.

**"Star-Lite" Hybrids.** A magnificent new strain of Columbine originated at Cole's. Giant-spurred beauties in a marvelous array of rich colors and color combinations. All the shades of the rainbow are present in this exquisite mixture. Robust growth, large quantities of bloom, and mammoth flowers 3 inches and more across make these appealing beauties one of the outstanding creations in this modern day. 2 feet. 50c each; \$1.35 for 3; \$4.00 for 10; \$8.00 for 25.

**Clematis-Flowered.** A distinct novelty. The flowers are from 1½ to 2 inches across and of the most beautiful and delicate pastel shades. Plants are sturdy and completely hardy. The flowers are entirely unlike anything you have ever seen, somewhat resembling the gorgeous blooms of the Hybrid Clematis vines. This is truly a treasure for your garden. 65c each; \$1.65 for 3; \$5.00 for 10.

**Crimson Star.** An English importation having lovely, long, crimson spurs and flowers with centers of purest white. It gives a unique starlike effect. Quite free flowering. 50c each; \$1.35 for 3; \$4.00 for 10.

**Mrs. Scott Elliott Hybrids.** We offer sturdy, well-grown plants of one of the finest old favorites. All the various mixed shades and colors. Attractive to humming birds. 40c each; \$1.05 for 3; \$3.00 for 10; \$6.00 for 25.



Star-Lite Hybrid Columbines



Blue Gardenia



Clematis-Flowered Columbine





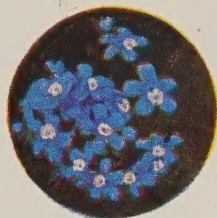
## Pink Beauty Forget-me-not

For many years plant hybridizers have been patiently trying to develop a truly pink, completely hardy Forget-me-not. Without doubt the lovely plant here offered achieves all the desired results. The color of the dainty little flowers is a delicate but true pink. The plant is always well furnished with attractive bright green foliage. In our gardens it is constantly in bloom, in fact a tiny pot plant set out late this spring had formed a neat 10-inch mound literally covered with bloom by August first. The beauty of these delicate flowers surpasses anything we have ever observed in the Forget-me-not family. 75c each; \$2.00 for 3; \$5.75 for 10.

## DEEP BLUE FORGET-ME-NOTS

(Anchusa Myosotidiflora)

Extremely distinct plant bearing its bright gentian-blue Forget-me-not flowers in clusters during May and June. A truly charming dwarf specimen. It is happy in either shade or sun. 12 inches. 50c each; \$1.35 for 3; \$4.00 for 10.



## Cole's New Double Painted Daisies

### A COLE SUPER SPECIAL

#### Shady Spot Perennial Group

A surprise package of at least 10 different varieties, chosen by our experts.

**10 Shady Spot Perennials for \$3.50.** Minimum value \$4.50 to \$5.25.

**25 Shady Spot Perennials for \$7.50.** Minimum value \$9.00 to \$11.00.

*Don't miss our complete perennial garden offer on page 3. It includes several of the plants on this page.*

Two of the finest of these wonderful early summer flowers. Their masses of saucy, fully crested blooms come on strong, upright stems 2 feet long. May and June. Plant in full sun; water in dry weather.

**Miami Queen.** Long guard petals of deep rose and a center tuft of dainty pink. 65c each; \$1.65 for 3.

**Pink Bouquet.** A new and fitting companion to Miami Queen. The petals are of a similar pink, but the center tuft is of a little deeper color. A very profuse bloomer. All the Painted Daisies are excellent for bouquets. 75c each; \$2.00 for 3.

### A COLE SUPER SPECIAL

2 each of above Painted Daisies.  
Value \$2.80 Special \$2.35



## CORALBELLS

**Pluie de Feu.** Of all the Coralbells we have ever listed or grown in our fields, this is the most satisfactory. Of exceedingly free-blooming habit, good foliage and an excellent rosy red color. All the flowers in the clusters are in bloom at once, making a most attractive sight. The 15-inch stems are excellent for cutting and the plants may be forced to advantage in the greenhouse or conservatory. We feel that this is definitely the finest Coralbell we have ever offered. 60c each; \$1.50 for 3; \$4.50 for 10.

## Everblooming Hardy Carnations

Thrill to the glory of having these new greenhouse blooms in your own garden. They require no more care than any of the common perennials to flower magnificently practically all summer long. Be sure to cut the blooms for indoor decoration to keep the new bloom coming on.

**Golden Sun.** Something new in the line of Hardy Carnations. The plants produce lovely, glowing yellow flowers on 12-inch stems. They are very profuse bloomers and make excellent cut flowers. They bloom most of the summer, particularly if kept cut. 45c each; \$1.20 for 3; \$3.50 for 10.

**King of the Blacks.** Large flowers of the deepest mahogany-maroon, almost black. Very free flowering. Its spicy fragrance is so intense that a spray of its flowers imparts a delightful aroma to the entire room. 12 inches. 45c each; \$1.20 for 3; \$3.50 for 10.

**Triumph Rose.** The growth is quite similar to the above two types, giving a profusion of gorgeous rose-colored flowers throughout the season. Long-lasting when cut. Quite fragrant. 45c each; \$1.20 for 3; \$3.50 for 10.

**White Lights.** A fit variety to round out the collection. Glistening white flowers that last indefinitely in the bouquet. This is truly the finest of the pure white Hardy Carnations. 45c each; \$1.20 for 3; \$3.50 for 10.

**Dianthus, Old Spice.** (Pat. No. 499.) A new everblooming hybrid, rich salmon-pink. Bears myriads of well-formed blooms of spicy fragrance all summer. Neat, cushion-like plant. Lasts indefinitely when cut. 12 inches. 60c each; \$1.50 for 3; \$4.25 for 10.



### A COLE SUPER SPECIAL

5 Plants—1 each of these 5 superior varieties.

Special. **\$2.00**

Value, \$2.40





Giant Pacific Delphiniums

## GIANT Hybrid Delphinium

For 1946 we offer what we think are the very finest and hardest of the Hybrid Delphiniums. These plants are a cross between the most select of the English type and the most select of the American type. Plants that run from 85% to 95% double and semi-double with all the colors and color combinations common to Delphiniums. Huge, striking flowers are produced on tall stems, marvelous for cutting, and gorgeous in massed effect in the garden. Best results are obtained by adding a little clay to sandy soil and feeding them with plenty of bone meal. 50c each; \$1.35 for 3; \$4.00 for 10; \$8.00 for 25.

### A COLE SUPER SPECIAL

## GIANT PACIFIC DELPHINIUM

The largest and most double flowers, the tallest and strongest stems of all Delphiniums, and the most marvelous range of colors.

The plants we offer are one-year-old, but, having been developed on fertile soil, under irrigation, they are as large as many offered at three times the price. Under good conditions, will produce many glorious flower spikes, 3 to 5 feet tall, the first season. (Value 50c to 60c each.) Special price: 4 for \$1.00; 10 for \$2.25; 25 for \$5.00.



## GIANT FOXGLOVES

**Shirley Hybrids.** Flower heads over 3 feet long made up of large, bell-shaped blossoms ranging from white to shell-pink to deepest rose. Many dotted crimson on maroon. Thrives in slight shade or full sun. 40c each; \$1.05 for 3; \$3.00 for 10.

## DAY LILIES

(*Hermerocallis*)

The Day Lily, or *Hermerocallis* family, is comprised of a group of plants requiring the least care and attention of anything in our garden and gives each year a magnificent display of color for outdoor effect and marvelous flowers for the bouquet. We offer a selection of the finest and most free-blooming varieties.

**Goldeni.** A Betscher introduction producing vigorous, deep orange-gold flowers on strong, 3-foot stems, in July and August. 40c each; \$1.05 for 3; \$3.00 for 10.

**J. A. Crawford.** Generous flowers of apricot touched with cadmium-yellow. One of the finest. 4 feet. June and July. 50c each; \$1.35 for 3; \$4.00 for 10.

**Mikado.** A Stout introduction with flowers of most striking color. Each rich orange petal is decorated with a large spot of mahogany-red. Heavy bloom heads on strong, 3-ft. stems. 60c each; \$1.50 for 3.

**The Gem.** Another one of the finest. Rich, deep golden yellow flowers on 3½- to 4-foot stems. Comes in bloom a little earlier than most of the rest. 60c each; \$1.50 for 3.

### A COLE SUPER SPECIAL

1 Each of the 4 Kinds of  
Day Lilies

Value \$2.10 Special \$1.65

2 Each of the 4 Kinds

Value \$4.20 Special \$3.10

## COLE'S OWN HARDY EVERBLOOMING

## Fuchsia

**Senorita.** Senorita, offspring of the famed Scarlet Beauty and is even more lovely than this great favorite. Senorita is extremely hardy and grows vigorously. Plants are upright, very compact, with glossy holly-green foliage. The jewelled, pendent blooms, 2 to 3 inches long, are flaming rose-red with a lovely mulberry-purple corolla. Beauty of the bloom is greatly enhanced by the bursting stamens showing bright, golden yellow. Flowers abundantly, continuously from late July until frost. Reaches a height in two years of 3 feet and a spread of 2½ feet. Here is a true sensation, so hardy that gardeners even as far north as Maine are raving about it. Strong, 1-year plants, 75c each; \$1.75 for 3.



Day Lily





**DOUBLE ROSE CAMPION**

One of the most attractive of the perennials. A beautiful display of rosy pink, double flowers on 15-inch stems from attractive, compact cushion-shaped plants with attractive foliage. It is a grand flower for the border or rockery and is excellent for cutting. It is quite easily grown, requiring a minimum of care. 60c each; \$1.50 for 3; \$4.50 for 10.

## GAILLARDIAS

The "Most Faithful of All Perennials"

Is a phrase that may be most justly applied to this attractive, but often neglected, group of plants. Always in bloom, easy to grow, fine for cutting, and in mass plantings the most vivid display of colors imaginable. No garden is complete without several groups of Gaillardias.

**Burgundy.** A lovely Burgundy-red flower of great beauty. A fine grower, excellent for cutting. Blooms all season. 2 feet. 50c each; \$1.35 for 3.

**Dazzler.** Aptly named because its maroon flowers, tipped with bright golden yellow, are indeed brilliantly striking. Blooms continuously. 2 feet. 40c each; \$1.05 for 3.

**Goblin.** A compact, shapely little plant, lower growing than the others. Many stems carry hundreds of flowers in bright yellow and red. June until autumn. 15 inches. 40c each; \$1.05 for 3.

**Tangerine.** A riot of color. Generous blooms of vivid tangerine-orange. Gives a striking effect all season. 2 feet. 40c each; \$1.05 for 3.

### A COLE SUPER SPECIAL

- |                                   |              |                |
|-----------------------------------|--------------|----------------|
| 1 Each of the Above 4 Gaillardias | Value \$1.70 | Special \$1.30 |
| 2 Each of the Above Gaillardias   | Value \$3.40 | Special \$2.40 |

In our plantings, a quantity of our very finest Gaillardias became mixed so that we were unable to separate the various sorts. We offer a special on these mixed Gaillardias—\$2.25 for 10.



**BABY'S BREATH**  
(Gypsophila)  
**Bristol Fairy.** As misty as an angel's breath. Double flowers are pure white fully three times the size of ordinary varieties. Extremely vigorous growth. Three feet high and 4 feet across. Blooms all summer. 75c each; \$2.00 for 3.  
**Paniculata.** This is the old-fashioned single white Baby's Breath that is so fine for cutting and marvelous in mixed bouquets as well as being excellent for mass planting in the garden. 40c each; \$1.05 for 3; \$2.95 for 10.

## Cole's Plant Sensation Hardy PINK CRAPEMYRTLE

The Southland's beloved plant now hardy to Northern Massachusetts. Available in a strain that survives our cold northern winters to leap from the ground in the spring and present its breath-taking bloom to bless the home grounds. This new plant is continually covered from July till frost with buds bursting into glorious, fluffy, soft pink blooms having crinkled, crepe-like petals. The flowers, as they fade in fall, still remain attractive with their bright green receptacles capped by many gold stamens. The foliage is dense, leathery, glossy green, on an upright, symmetrical bush. Here is a truly unsurpassed spectacle in summer bloom. May be easily grown in any good garden soil and should be given a loose mulch over the winter. Heavy plants, \$1.75 each; \$4.50 for 3.

### DIANTHUS *Tiny Rubies*

These little plants are without equal for rock gardens, as edgings and for the front of the border. The foliage, completely evergreen, in the fall when the snow first comes, is a reminder in the spring that flower time will soon be here. *Tiny Rubies* is a variety developed from the *Rose Cushion*, bearing myriads of tiny, fully double, intensely fragrant little flowers during the regular spring blooming period, followed with intermittent bloom all summer. We have never seen this plant at any time of the year that it was not attractive. 60c each; \$1.50 for 3; \$4.50 for 10.



Cole's New Hardy Pink Crapemyrtle





Shasta Daisy, Esther Reed

## SHASTA DAISIES

As is our custom, we try each year to improve our listing in this group. You will note there are a couple of new ones. These, we believe, are a great improvement over the varieties which they replace. Shasta Daisies are strong growers, attractive in the garden and one of the finest of the perennials for cutting.

**Esther Reed.** Flowers up to four inches across are of the purest white, completely double and fully crested. In bloom constantly from June through October. Invaluable for cutting. 18 inches. 60c each; \$1.50 for 3.

**Giant Marconi.** This is one of the finest of the later Shasta Daisy introductions. The plants are strong growing and the stems are sturdy and hold the stately, 2½- to 3-inch flowers erect, both in the garden and bouquet. The flowers are double and frilled. We think you will find this a most satisfactory addition to your garden. 75c each; \$2.00 for 3.

**Mount Shasta.** The newest and finest double Shasta Daisy. A mammoth, beautiful, high-crested, full double of lovely pure white. Guard petals underneath the crest are completely overlapping. Continuous bloom from late spring until frost. Sturdy and erect. 2 ft. 75c each; \$2.00 for 3.

**Zinnia Flowered.** This, we believe, is the finest of the Single Shasta Daisies. Flowers are larger and the plants a little stronger growing and more prolific in blossom than the Sensation which it replaces. For our many customers, who prefer the single Shasta Daisy, this certainly will be a fine one. 60c each; \$1.50 for 3.

### A COLE SUPER SPECIAL

4 Greatest Shasta Daisies

1 each of the above.

Value \$2.70 Special \$2.30

### MOSS OR CREEPING PHLOX

Early spring-flowering type with very decorative, mosslike foliage. Flowers are so profuse as to completely smother the plant during April, May, and June.

**Amoena.** One of the very best varieties for carpeting the ground, the rockery, or the border. In the spring, the plants, which grow about 4 inches high, are heaps of bright pink flowers. Much prefers a sunny location.

**Atropurpurea.** New. Large, rosy red blooms. Moss-green foliage.

**Blue Hill.** Showy, pale blue. Repeats in the fall. **Pearl.** Pure white. Very neat, compact plant with grand foliage.

**Rosea.** One of the very finest of the rose-pink varieties for covering banks. Also excellent for rock gardens and the border.

**Vivid.** The brightest of all the Moss Phlox. The outstanding shimmering pink of the blossoms surpasses all other Creeping Phlox in brilliance.

The above 6 Creeping Phlox: 40c each; \$1.05 for 3; \$3.00 for 10.

### A COLE SUPER SPECIAL

1 Each of the Above 6 Varieties

Value \$2.40 Special \$2.00

2 Each of the Above 6 Varieties

Value \$4.80

Special \$3.75



### TRADESCANTIA

New, beautiful, dwarf growing type that blooms from spring throughout the summer, right up to frost. Some blooms are visible nearly every day. They are easy to grow and, in their full glory, will delight any gardener's eye. Will grow about 12 to 15 inches high.

**Blue Stone.** Rich blue flowers in enormous quantities. 50c each; \$1.35 for 3.

**Purple Dome.** Great clusters of brilliant purple flowers. 50c each; \$1.35 for 3.

### Lily-of-the-Valley

The newest strain of this old garden favorite. Larger bells, greater fragrance; free blooming. Enjoys full shade. Cole offers large clumps. 45c each; \$1.20 for 3; \$3.50 for 10.



Moss Phlox

### COLE'S GIANT HYBRID PRIMROSES

A new, extra large-flowered strain grown from imported seed. Many new and unusual colors are represented, including combinations of lilac, pink, coppery red, dark red and yellow. Definitely a strain of exhibition quality. April and May. Not available in named colors. 12 inches. 50c each; \$1.35 for 3; \$4.00 for 10; \$8.00 for 25.





## Large Flowered PENSTEMONS

Three new everblooming Penstemons. Here are three sensational varieties of those much-beloved plants of the South, now available to gardeners as far north as upper New York. Their Gloxinia-like flowers make a welcome display in any garden or perennial border.

**Firebird.** The newest. Enormous flowers, bright cherry-crimson touched with white at the throat. Myriads of blooms load the plant from June until frost. Grand for cutting. 20 inches. 60c each; \$1.50 for 3.

**Garnet.** Lovely, rich, warm, glowing carmine. Great masses of this exquisite bloom render a profusion of flowers all summer from June until frost. Cannot be beat for cutting. 18 inches. 50c each; \$1.35 for 3.

**Pink Beauty.** A lovely clear shell-pink. The Snapdragon-like flowers cover the 3-foot stem all summer long. A worthy and contrasting companion to Firebird and Garnet. 50c each; \$1.35 for 3.

### A COLE SUPER SPECIAL

3 Penstemons—1 Each of  
Above  
Value \$1.60 Special \$1.40



Penstemon, Garnet



## GOLDEN GLOBEFLOWER (Trollius Excelsior)

This is, without doubt, the most outstanding of all the Golden Globeflowers. The brilliant golden orange flowers are borne on strong, sturdy, upright stems. The foliage is most attractive. An excellent subject for cutting as the flowers are long-lasting in the bouquet and an excellent accent in the garden. You will want several of these. 60c each; \$1.50 for 3; \$4.50 for 10.

## VERONICAS

**Longifolia Subsessilis.** One of the true aristocrats of perennials. Heavy spikes, completely covered with blooms of an intense rich blue on stiff, 2-foot stems. A glorious array of color from August throughout the fall. In spite of newer introductions, this variety remains unequalled as King of the Veronicas. 50c each; \$1.35 for 3; \$4.00 for 10.

**Armena.** One of the low-growing Veronicas forming a dense mass of lush green foliage surmounted by a profusion of bright blue spikes of dainty flowers. The spring flowers are followed by an intermittent bloom throughout the summer. An excellent plant for Rock Gardens and would be fine for the edge of Rose beds or perennial beds. It will bloom well and grow profusely in a light shade. 50c each; \$1.35 for 3; \$4.00 for 10.



Veronica  
Longifolia  
Subsessilis



## SCABIOSA

Fischer's Pincushion  
Plant

A handsome deep blue flower—one of our garden favorites. Gracefully nodding 1½-inch flower heads on the long stems, most desirable for cutting. Strong growing, attractive foliage. 2 feet. 60c each; \$1.50 for 3; \$4.50 for 10.



## RUSSELL LUPINS

**The Famous Russell Hybrids.** Enormous, symmetrical flower spikes in all the colors of the rainbow from white to deepest violet, including many bicolors and tricolors. All the flowers on the 18- to 24-inch spikes open at one time, creating one of the finest displays in the garden. A "must have." June. 3 to 5 feet. 60c each; \$1.50 for 3; \$4.50 for 10.



## NOVEL *Tritomas*

For new artistic effects in your garden, border and foundation, Cole offers these new, improved Tritomas. All have graceful, deep green foliage from 15 to 18 inches high and bloom nearly the entire summer.

**Cole's New Hybrids.** An entirely different strain that resulted from an accidental cross in our fields. So many exotic colors and color combinations appeared that we were unable to separate them. Ivory, yellow, bright reds, coral and apricot shades and bicolors compose one of the grandest mixtures ever offered. Don't omit these from your order. 50c each; \$1.35 for 3; \$4.00 for 10.

**Primrose Beauty.** Spotless primrose-yellow spikes produced on 40-inch stems are unique for their delightful color. A late summer bloomer adding color to the border and life to the bouquet. 50c each; \$1.35 for 3.

**Springtime.** (Plant Patent No. 318.) A fascinating new hardy Tritoma which flowers in early July. The upper part of the flower is rich coral-red, the lower half ivory-yellow. These sparkling and clear contrasting colors hold one's attention in a pleasing manner. Springtime has been tested for hardiness for five winters in all kinds of soil and has weathered these conditions without any protection. We heartily recommend this novelty. A well-established plant will produce as many as 10 to 15 flower spikes about 3 feet tall. They are very graceful and superb for cutting. 65c each; \$1.75 for 3.

### A COLE SUPER SPECIAL

1 Each of the Above Novel Tritomas  
Value \$1.65 Special \$1.50

## SWEET VIOLETS (*Viola odorata*)

**Prince of Wales.** Very lovely, sweet-scented, deep purple. Handsome, dark green foliage that forms a dense carpet, once the plant is established. A bed of these, in a shady place, is a never-ending source of enjoyment. 45c each; \$1.20 for 3.

**Rosina.** Very choice, dainty, rose-pink blooms, deliciously fragrant. Wondrous display in spring and again in late autumn. If you don't already have Rosina, by all means get it. 50c each; \$1.35 for 3.

**Royal Robe.** A magnificent violet novelty of breathtaking beauty and size. Exceedingly fragrant blossoms of deep lustrous violet open out flat like a Pansy. Monstrous flowers on stems 10 inches long. Words are not equal to a complete description of their beauty. 60c each; \$1.50 for 3.

### A COLE SUPER SPECIAL

3 Plants—1 Each of Above  
3 Violets

Value \$1.55 Special \$1.25

6 Plants—2 Each of Above  
3 Violets

Value \$3.10 Special \$2.40



Tritoma, Springtime



Violet,  
Royal  
Robe



## Rose Daphne (*Garland Flower*)

(*Daphne Cneorum*.) 8 to 12 inches. One of the most delightful flowers you have ever seen. A small shrub that does not grow over 8 to 12 inches high, but will spread, in time, to make a plant 2 feet wide. In spring, at intervals during the summer, and again in early fall, it becomes gorgeously loaded down with delightfully fragrant, rose-pink flowers. Use it as an edging for evergreens and for the rock garden. Enjoys a little sun and likes lime. 6- to 9-inch spread, B&B, \$1.25 each; \$3.25 for 3. 9- to 12-inch spread, B&B, \$1.75 each; \$4.50 for 3.



# HARDY CLIMBING ROSES

*Selected for their Hardiness  
and Abundance of Bloom*

**Blaze.** (Plant Patent No. 10.) Blazing scarlet flowers, double and well shaped. A great supply of blooms over a long first blooming period, continuing to flower intermittently all season. An outstanding climber in every respect. \$1.50 each; \$3.75 for 3.

**Climbing American Beauty.** Large buds and flowers of deep rose-pink. The fully double, sweet-scented flowers cover the plant from base to top and are carried on long stems; fine for cutting. \$1.10 each; \$3.00 for 3.

**Dr. W. Van Fleet.** Its long-pointed buds and flowers are a rich flesh-pink, on stems 12 to 18 inches long. Splendid for cutting. Still one of the finest. \$1.10 each; \$3.00 for 3.

**Flash.** (Plant Patent No. 396.) All-America. The most vividly colored pillar Rose in existence. Striking yellow buds with scarlet suffusion open into a gleaming orange-scarlet. Fragrant. Attractive, dark green foliage. \$1.50 each; \$3.75 for 3.

**King Midas.** (Plant Patent No. 586.) The longest blooming yellow climber. Extreme hardiness, resistance to disease, fast and easy growth, and its lavishly flowering habit make this Rose a real treasure. Lovely long buds, deep gold touched with red, slowly open to large, Hybrid-Tea-like flowers of a clear unfading yellow. The strong, medium long stems, covered with glossy dark green foliage, become laden with 4- to 5-inch blooms in clusters of four to six. Truly a blessing to Rose lovers. \$1.50 each; \$3.75 for 3.

**New Dawn.** (Plant Patent No. 1.) Once called "the best hardy, everblooming Climbing Rose ever produced anywhere in the world." It really blooms all summer. Masses of soft pink flowers and delightful fragrance. \$1.50 each; \$3.75 for 3.

**Paul's Scarlet Climber.** Blooms are of a magnificent scarlet shade; semi-double and very freely produced in large clusters. Hardy and has very strong climbing habit; always popular. \$1.10 each; \$3.00 for 3.

**Prosperity.** Truly a white gem among the hardy Climbing Roses. Large clusters of medium sized, fully double white blossoms borne over an extremely long season. May be used as a Pillar Rose. \$1.10 each; \$3.00 for 3.

**A COLE SUPER SPECIAL**  
A Super Collection of Climbing Roses. 1 each of the new patented varieties; **Blaze, Flash, King Midas, and New Dawn.**  
Value \$6.00  
Special \$5.00



Climbing American Beauty



New Dawn



Flash



# Cole Supreme HYBRID TEA ROSES

We constantly shuffle and re-shuffle our Rose list in an effort to give you the most satisfactory kinds. Each one is thoroughly tested in our nurseries before being offered. If you miss an old favorite in the list, you may be sure that the one replacing it is a definite improvement. As we cannot offer all of the hundreds of varieties, we try to have the best.

## NEW PATENTED KINDS

### Apricot Queen. (Plant Patent No. 464.)

This is another newer variety that we think should be a winner. A profusion of medium sized, dainty, clear apricot color buds is borne on strong, slender stems. The full-petaled flowers open to a pure apricot. As the petals open completely, they show an edging of a slightly lighter shade. The flower is beautiful from the earliest bud stage until the petals drop off. The plant is a



Good News

bushy grower, fully foliaged even during hot weather when many others lose their leaves. The stems are long and make this an excellent flower for cutting; a beautiful picture in the garden. \$1.50 each; \$3.75 for 3.

### Crimson Glory. (Plant Patent No. 150.)

Definitely the outstanding deep red Rose. Dozens of intense, deep crimson flowers produced on a free-branching bush. Flowers are unusually large and of exquisite fragrance. \$1.50 each; \$3.75 for 3.

### Good News. (Plant Patent No. 426.)

One of the finest of the latest developments. Deep coppery buds open fully to great large-petaled blossoms with a glowing coppery center, running to shell-pink at the outer edge. Rich fragrance. Vigorous, healthy plants, always in bloom. Attractive deep green, healthy foliage. One of the really better Roses. \$1.50 each; \$3.75 for 3.

### Grand Duchess Charlotte. (Propagation Rights Reesrved.)

All-America. A new shade of red seen only in time-mellowed tapestries. A color hitherto unknown in Roses. Beautiful, long, streamlined buds are rich claret color and open to firm-petaled blooms that gradually change to a lovely Begonia-rose. Delicately fragrant. \$1.50 each; \$3.75 for 3.

### Mary Margaret McBride. (Plant Patent No. 537.)

All-America. Perfect in form from the tight bud stage until the petals drop. Very full, double blooms are a clear deep coral-pink and have a gold suffusion at the base of petals. A never-fading beauty that will soon be in every Rose-lover's garden. \$1.50 each; \$3.75 for 3.

### McGredy's Sunset. (Plant Patent No. 317.)

Aptly named for a summer sunset. Petals are clear golden yellow edged with



Crimson Glory

orange on outside and flushed with scarlet inside. Color combination heightened by expansion of bloom. Highly fragrant flowers are borne on a stately bush of dark green foliage. Excellent in hot weather. \$1.50 each; \$3.75 for 3.

### Rex Anderson. (Plant Patent No. 305.)

America's favorite new white Rose. A soft white with an ivory overcast, somewhat deeper in the center. Pleasantly perfumed large blooms are bunched together on long stems. Very free and vigorous grower, having grayish green foliage. \$1.50 each; \$3.75 for 3.

### R. M. S. Queen Mary. (Plant Patent No. 249.)

A charming salmon-pink. Constant flowering, it produces long-lasting blooms on straight, strong stems. An outstanding type. \$1.50 each; \$3.75 for 3.



Grand Duchess Charlotte ©

## A COLE SUPER SPECIAL

One each of the above  
Glorious Roses—8 plants—  
Cole's superb top grade.

Value \$12.00 Special \$9.75

## Cultural Hints

Always dig the hole too large. Be sure of good drainage. Plant so that the graft joint is just below the ground. Spread the roots well and tamp soil firmly around them. Cut back tops to 4 to 6 inches and cover entire plant with moist soil. Do not remove this covering till plants start to show growth (about 10 days.) Repeat covering process in late fall for winter protection and best results. Prune more than you want to or think necessary.



Rex Anderson ©



# THE BEST of the STANDARD VARIETIES

**All varieties: \$1.25 each; \$3.50 for 3.** Prices are for 2-year plants of Cole's superb top grade, covered by Cole's liberal guarantee stated on the inside front cover.

**Betty Uprichard.** Large, salmon-pink flowers, the exterior orange-carmine, with rolling edges.



Mrs. E. P. Thom



Editor McFarland

**Condesa de Sastago.** The golden yellow buds, striped with old gold, open to spicily scented blooms of coppery pink blushed yellow. Strong grower.

**Director Rubio.** Large, fluffy, cochineal-pink flowers produced singly on stiff stems. Profuse bloomer, vigorous grower.

**Duquesa de Penaranda.** Large, double flowers of Nasturtium-pink with shadings of orange and copper-apricot. Upright growing.

**Editor McFarland.** Clear brilliant pink of perfect form. Long-lasting when cut.

**Golden Sastago.** A Buttercup-yellow sport of the beloved Condesa de Sastago. A vigorous grower; very free flowering and fragrant.

**Joanna Hill.** Large, full, fragrant flowers of clear yellow with orange-yellow heart.

**Leonard Barron.** Flowers, when fully opened, show a mixture of salmon-buff and shell-pink, well blended. Very large blooms; good grower.

**McGredy's Ivory.** Very beautiful, large, double formed flowers of soft creamy white, shading to yellow at the base. Very prolific and vigorous.

**McGredy's Scarlet.** Fragrant, double flowers of bright scarlet with orange-yellow flush at base of petals. The upper portions are crimson shaded.

**Mme. Jules Bouche.** One of the best white everblooming Roses ever introduced. Large, double fragrant flowers are of fine form.

**Mrs. E. P. Thom.** Perhaps the most abundant-flowered yellow garden Rose. Fully double, shapely flowers of lemon-yellow.

**Nuntius Pacelli.** Fragrant flowers opening creamy white and changing to the purest white. Very double and very prolific.

**President Hoover.** Large flowers of a very charming combination of cerise-pink, flame, scarlet and yellow; very fragrant.

**Pink Dawn.** One of the finest of all pink Roses. Each Rose bud opens to a lovely rose-pink tinted slightly with orange at the base. Very fragrant. A strong grower with excellent foliage. Very free-blooming.

**Poinsettia.** The most brilliant red Rose ever produced. Long, pointed, perfect buds; glowing fire-red. Fine as a cut flower.

**Sister Therese.** Chrome-yellow buds open to flowers of rich Daffodil-yellow; delightfully fragrant. A worth-while specimen.



Leonard Barron



Mme. Jules Bouche



McGredy's Scarlet

## A COLE SUPER SPECIAL

### COLE'S COLOR ROSE GARDEN

The different varieties of Everblooming Hybrid Tea Roses. A careful selection of named 2-year-old plants, including all colors. This collection includes many outstanding favorites listed in this catalog.

Ten superb top grade plants for \$9.90.

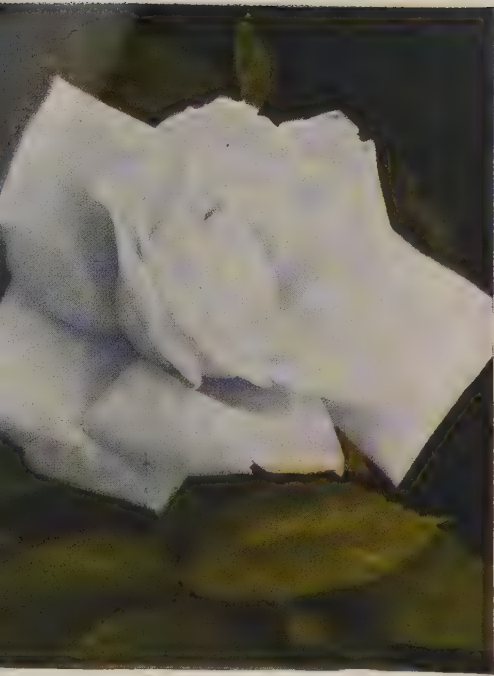
## A COLE SUPER SPECIAL

### Justly Famous Cole's Bargain Rainbow Rose Offer.

These are all 2-year-old, field-grown plants, lighter than our top grade. It is made up of our very finest varieties and will give complete satisfaction in every respect.

5 Hybrid Tea Roses, Assorted. \$2.90  
10 Hybrid Tea Roses, Assorted. 5.35  
20 Hybrid Tea Roses, Assorted. 9.75





Nuntius Pacelli



Betty Uprichard



Poinsettia



President Herbert Hoover

*Cole's*  
"GLORY of AMERICA"  
Rose Called

*Fantasy*

**COLLECTION**

The 6 Roses listed on this page in colors. Superb Top Grade, for

**\$6<sup>50</sup>**

- Betty Uprichard
- Condesa de Sastago
- Sister Therese
- Nuntius Pacelli
- President Hoover
- Poinsettia



Sister Therese



Condesa de Sastago

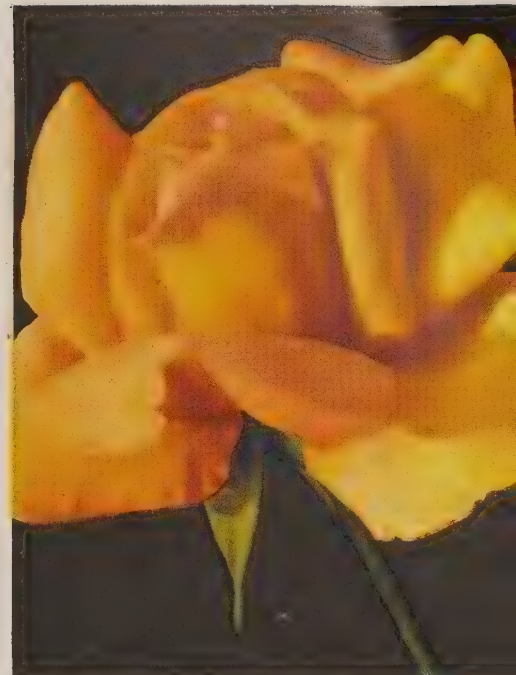




Duquesa de Penaranda



McGredy's Ivory



Joanna Hill

# ERICA" ection FOR 1946

Twelve finest Roses selected for their thriftiness, hardiness, dependability, and free blooming qualities. All covered by Cole's guarantee as stated on page 2.

THE 12 Roses listed on these two pages, in Cole's superb top grade, for **\$12<sup>50</sup>**



Pink Dawn

For a Complete Listing of Roses See pages 13 to 18.



Golden Sastago



Director Rubio

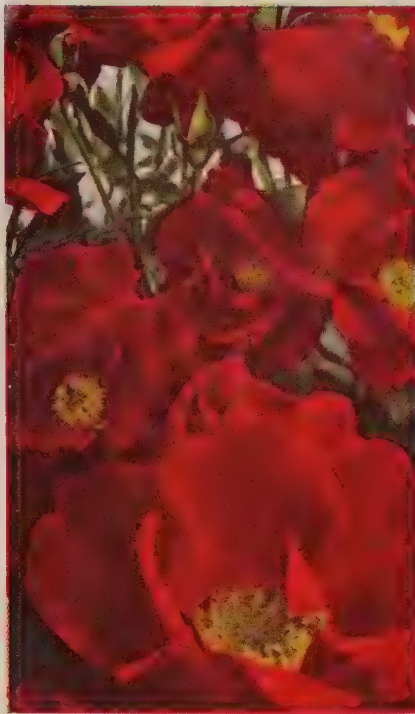
## Dream COLLECTION

The 6 Roses listed on this page in colors. Superb Top Grade, for

**\$6<sup>50</sup>**

- Pink Dawn
- Duquesa de Penaranda
- Golden Sastago
- Joanna Hill
- McGredy's Ivory
- Director Rubio





Donald Prior

# Super Hardy FLORIBUNDA ROSES

ROSEDOM'S MOST PROLIFIC CREATIONS

Very few people realize the value of these exceedingly fine Roses. They will succeed where no other Roses will, both in poor soil and, in a great many cases, some shade. They are extremely hardy and do not require the winter banking that the other Roses need. They are always in blossom. They may be used any place—in shrub borders, in mass planting, as accent in a Hybrid Tea Rose bed. In fact, they are one of the most versatile and usable plants offered in our catalog. No garden is complete without several of these plants. As we definitely believe in mass plantings of these, we are offering 5 varieties in a collection, only

**FLORIBUNDA**  
Bedding Collection  
Special \$4.85

Cole's Pink Lafayette. Lafayette Improved. Red.  
Kirsten Poulsen. A good red. Pink Gruss an Aachen. Blush-pink.  
Golden Salmon  
These varieties sold only in collections.

In addition to this fine collection of the older varieties, we are offering the following new

## PATENTED FLORIBUNDA ROSES

**Betty Prior.** (Plant Patent No. 340.) Large clusters of flowers open lively red, turning to delicate shell-pink. Continuous bloom throughout the season. A rugged grower, abundantly branched. \$1.25 each; \$3.15 for 3.

**Donald Prior.** (Plant Patent No. 337.) Abundant clusters of brilliant, wine-red flowers. Plants are of compact branching habit with lustrous dark green foliage, always in blossom. \$1.25 each; \$3.15 for 3.

**Permanent Wave.** (Plant Patent No. 107.) The deep rose-pink flowers are borne profusely and open from artistic buds of a lovely carmine color. Each flower is beautifully waved and crinkled. Dark, purplish foliage is borne on sturdy, compact plants. \$1.25 each; \$3.15 for 3.

**Pinocchio.** (Plant Patent No. 484.) This lovely little Rose blooms so freely that "everblooming" is hardly adequate. The 20- to 24-inch plants are continuously aglow with the lovely, pastel flowers. The rich salmon buds, touched with gold, open slowly to exhibition blooms which seem a miniature Hybrid Tea Rose. As the flowers open, they gradually become a clear soft pink. Flowers last very well when cut and the exotic, fruity fragrance is a delight. The rich, dark green foliage is disease resistant and quite free from pests. \$1.25 each; \$3.15 for 3.

**Summer Snow.** (Plant Patent No. 417.) Beautiful clusters of snow-white flowers. The most prolific of all white Floribundas. Tall growing and very hardy; blooms up to frost. Very useful for accenting. Fragrant. \$1.25 each; \$3.15 for 3.

### A COLE SUPER SPECIAL

All 5 PATENTED

Floribunda Roses

Value \$6.25 Special \$5.25



© Pinocchio

## BROADLEAF EVERGREENS

### HARDY AMERICAN CHRISTMAS HOLLY

(*Ilex opaca*)

Everyone wants "Christmas Holly" in his garden, but to date, the cost of large plants has been prohibitive to many. To meet this situation, Cole offers fine 3-year-old trees which will grow to large size. As these plants are unisexual, the female only bearing the fruit, we recommend that you plant a minimum of three plants in a group within 5 feet of each other, if certain fruiting is desired. Fine 8- to 12-inch, husky field plants, \$1.00 each; \$2.25 for 3.

### OREGON HOLLYGRAPE

(*Mahonia*)

Fine, Holly-like leaves; shiny, large, metallic looking; bronzy red in autumn. In spring, large clusters of yellow flowers appear, followed by frosty blue fruit in July, which lasts well into the fall. One of the most attractive evergreens and very easy to grow. 12 to 15 inches, \$1.00 each; \$2.50 for 3.

### SPECIAL OFFER OF RHODODENDRONS

**Carolina.** Dwarf growing; blooms when very young. A mass of light pure pink flowers in June. Blooms very profusely. Dark, olive-green leaves. Husky, branched plants 9 to 12 inches high—grow to 4 feet. \$1.60 for 2; \$3.50 for 5; \$6.50 for 10.

**Catawba.** Crimson buds open to huge clusters of lavender-pink flowers in late May. Dense, glossy green foliage. Healthy plants, 12 to 15 inches, grow to 6 feet. \$1.60 for 2; \$3.50 for 5; \$6.50 for 10.

### MOUNTAIN LAUREL

(*Kalmia latifolia*)

Of the Rhododendron family, with dense, glossy foliage, and medium light pink flowers in great profusion in May and June. Bushy, shapely plant of medium height. Fine plants, 10 to 12 inches, \$1.60 for 2; \$3.50 for 5; \$6.50 for 10.

### A COLE SUPER SPECIAL

4 Rhododendrons

2 Carolina 2 Catawba  
Value \$5.00 Special \$2.75

**CULTURAL HINTS:** This entire group of plants much prefers a partly acid soil. Semi-shade and some protection from the high winter winds is highly desirable. Never use lime or bone meal with this group of plants. Plant in the same manner, otherwise, as shrubs.



Holly



Catawba  
Rhododendron



# Nature's Draperies--THE VINES

**CULTURAL HINTS:** Vines require the same planting methods as shrubs. If they are to grow on a building, don't plant too close. 1 foot away is good and 1½ feet is better.

If you wish to train the Wisteria to a tree form, remove side shoots and train the strongest leader to a stake to the desired height. Allow it to branch at the top only. Stake may be removed after a year or two as the plant will then be strong enough to support itself. Old Wisteria plants that do not bloom should be heavily root pruned. Spring planting only.

## GLORIOUS NEW HYBRID WISTERIAS

Lovely new hybrids—long, glorious clusters of dainty, pea-shaped flowers. Long blooming period and usually start to bloom the first year after planting. New varieties may be trained in tree form that will produce large, sturdy trunks. (See cultural hints.)

**Floribunda Rosea.** The finest pink Wisteria. Very profuse blooms. Clusters 1½ feet long.

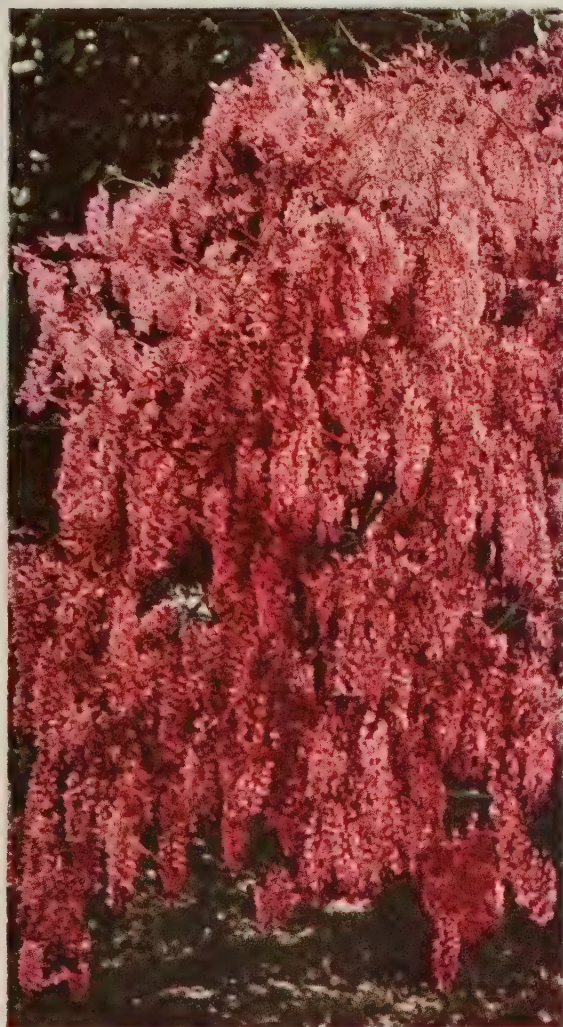
**Kyushaku.** Translated, this means "nine feet." The lavender flower clusters actually do attain a length of three feet.

**Violacea plena.** Double flowers of the deepest color. Dark purple clusters 1½ feet long.

The above in fine, 2-year grafted plants: \$2.00 each; any 3 for \$5.50.

### OLD-FASHIONED BLUE WISTERIA

The true-blue Wisteria. Massive, dense, weeping clusters of lovely blue flowers on a fast-growing vine. Foliage is glossy, light green. 90c each; \$2.25 for 3.



Wisteria

## HONEYSUCKLE

**Goldflame.** An exquisite variety. Immense showy clusters of trumpet-shaped buds with fragrant flower clusters up to seven inches across. Outside petals brilliant flame-pink, inside creamy golden yellow. Dark glossy foliage. Can be sheared to a hedge or shrub, or will grow naturally as a vine. Blooms from spring until heavy frost. 2-year plants, 90c each; \$2.30 for 3.

**Halliana.** (Hall's Honeysuckle.) A very strong growing vine that spreads to form a dense mat. Because it roots deeply, it is one of the best vines for holding a bank. Evergreen foliage and fragrant, cream-colored flowers that appear all summer. Also fine for trellises. Plant 18 inches apart. 2-year plants, 60c each; \$1.50 for 3; \$4.00 for 10; \$8.00 for 25.



Goldflame

Honeysuckle

### BOSTON IVY

The most widely used Ivy for covering brick, stone or wood. Dense, lustrous green foliage takes on grand autumn tints. The blue berries add attractiveness in fall and early winter. 2-year plants, 75c each; \$2.00 for 3; \$5.50 for 10.

### ORIENTAL BITTERSWEET (*Celastrus*)

Nothing finer for winter bouquets. You can have these brilliant orange berries in your own back yard, they are so easily grown. We list the superior Oriental Bittersweet because it is certain to fruit and is completely covered with the very decorative berries throughout the fall season. A very rapid grower. Grows well in either sun or shade. 3-year-old, heavy, field-grown plants, 90c each; \$2.30 for 3.



## Large-Flowered CLEMATIS

New, exceptionally large-flowered varieties. No other climbing vine gives the continuous display of color and all-around beauty of Hybrid Clematis.

**Crimson King.** Spectacular, large, crimson-red flowers with white center. Flowers often measure up to 6 inches. 2-year plants, \$1.50 each; \$4.00 for 3.

**Henryi.** The loveliest of the Hybrid white, Large-Flowered Clematis. A picture, either planted alone or in contrast with any of the others, particularly Jackmani. \$1.25 each; \$3.25 for 3.

**Jackmani.** Mammoth purple-blue flowers in amazing profusion. \$1.25 each; \$3.25 for 3.

**Mme. Baron Veillard.** Lovely large Lilac-rose flowers in great quantities all summer. \$1.25 each; \$3.25 for 3.

Special: 1 each of above 4 varieties for \$4.50.

### SWEET AUTUMN CLEMATIS (*Paniculata*)

Very hardy fast growing climber with dense green foliage which becomes covered with pure white, deliciously fragrant flowers in August and September. 2-year, field-grown plants, 90c each; \$2.25 for 3.

### SILVER LACE VINE (*Polygonum*)

One of our most useful vines. Fluffy, fleecelike flowers in great sprays. Grows rapidly and is extremely valuable for covering unsightly old fences and developing a quick shade on a sunny porch. Foliage is a good shade of green and very dense. The plants will often grow as much as 20 feet in a single year. 2-year plants, 90c each; \$2.30 for 3.



Silver Lace Vine



# Cole's Finest Flowering and Ornamental SHRUBS

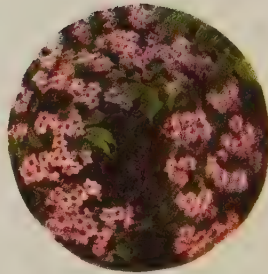


Cole's Acid  
Peat Humus  
Offered On  
Page 28

## Chinese Flame Azalea

3 to 4 feet. The most successful Azalea in the North. The large, showy flowers precede the leaves in the spring-time and their innumerable shades of orange, flame, yellow and salmon furnish a display of never-to-be-forgotten brilliance. Very hardy. Cole's Azaleas will flourish if planted in a somewhat shady location and in the correct soil. We suggest a half-and-half mixture of "Cole's Acid Peat" with any fairly good soil. **Specially Priced:**

- 6 to 9 inches, \$1.10 each; \$3.00 for 3.
- 9 to 12 inches, \$1.85 each; \$4.75 for 3.
- 12 to 15 inches, \$3.00 each; \$8.00 for 3.



## BEAUTY BUSH (*Kolkwitzia*)

8 feet. A specimen flowering shrub possessing great beauty and adaptability. While upright in growth, its branches arch down gracefully. During the blooming season in June, it is weighted down with lovely light pink, bell-like flowers. Very hardy and will grow under any soil conditions. 1½ to 2 ft., \$1.00; 2 to 3 ft., \$1.50 each.



## BLUE MIST (*Caryopteris*)

New. Another lovely southern plant available, now, in hardy form. A real contribution to the meager list of summer and fall-flowering shrubs. It is covered from August till frost with many clusters of powdery blue, fringed flowers. Blue Mist grows about 2 feet tall and is perfectly rounded, forming a small mound about 2½ feet in diameter. When in bloom, the effect is of a huge cluster of sparkling amethysts in a silvery green setting. Even more beautiful than the tender variety it replaces. For spring planting only. \$1.50 each; \$4.00 for 3.



## BUTTERFLY BUSH (*Summer Lilac*)

A group of new Buddleias with such outstanding beauty and rich coloring that no color picture can do them justice. Their striking, glowing beauty actually attracts butterflies. Huge, long, highly colored spikes of bloom are carried in enormous sprays throughout summer and autumn. All are extremely hardy and will grow about 5 feet tall. Their use in cutting makes them invaluable. All will bloom gloriously the first year. Very easy to grow. Spring planting only.

**Charming.** Lovely lavender-pink. 2-year plants, 75c each.

**Concord.** Intense purplish blue. The full luscious color of ripe Concord Grapes. 2-year plants, 75c each.

**Dubonnet.** Lovely Dubonnet lavender-red. Very strong growth. 2-year plants, 75c each.

**Royal Purple.** Brand new. A rich, deep, glowing purple, it is absolutely beyond any description. Extra long, very full spikes with close-set flowers. 90c each.

**Royal Red.** (Plant Patent Applied For.) The newest Buddleia. Finally one that can truly be called red, the color everyone has been waiting for. A real symphony in color. Very hardy. 90c each.



## CORALBERRY (*Symphoricarpos chenaulti*)

4 feet. Cascades of foliage, flowers and berries. Fine decorative foliage that lasts well into the winter; blush-pink flowers in the spring, and a wealth of coral-pink berries in the fall and through winter. Does well in shade or sun. Grows anywhere. 2 to 3 ft., 90c each; \$2.25 for 3.

## DOUBLE PINK FLOWERING ALMOND (*Prunus glandulosa*)

4 feet. The earliest spring-flowering shrub, in full bloom long before the leaves appear. Beautiful, double, brilliant pink blooms snuggle tight to the twigs, completely covering the bush. Fine for cutting. 1½ to 2 ft., 90c each; 2 to 3 ft., \$1.25 each.



### A COLE SUPER SPECIAL

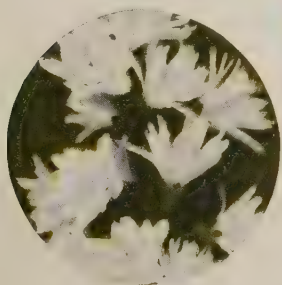
3 BUDDLEIAS:  
1 Charming 1 Dubonnet 1 Royal Red  
(Value \$2.40) Special \$1.95

5 Superb Buddleias—1 each of all listed above. (Value \$4.05.) Special \$3.25.



Latest varieties and selected strains of the old favorites. Chosen for their all-around good qualities.

**Cultural Hints:** Shrubs like any good fertile garden soil. Acid (sour) soil will not give the best results, but most types do fairly well in it. Azaleas and Blue Hydrangeas **must** have an acid (sour) soil and like plenty of humus. Plant to the depth they have been grown. You can see the soil line on the plants. Spread the roots well and tamp soil around them. Water well. **Never** remove the burlap from balled and burlapped plants. Plant "as is," cutting only top strings after setting. Don't over-water, as most plants don't like "wet feet" any more than humans.



### DEUTZIA GRACILIS

**Gracilis.** (Slender Deutzia.) 3 feet. A shrub of grace and beauty. Slender and erect, it has a fountain-like branching habit and is most effective. It is covered with creamy white flowers in the early spring. Does well in light shade and is particularly useful for edging paths and walks. May, 15 to 18 in., 90c each; 3 for \$2.30; 10 for \$6.50.



### CRIMSON BEAUTY

#### Sensational New Double Red Flowering Quince

4½ feet. For many years, horticulturists have been attempting to develop an entirely new and hardy strain of Flowering Quince. We believe that the one we are offering here represents the peak of all efforts. The flowers are of good size and fully double. A marvelous, glowing red-carmine color with attractive yellow stamens peeking through the many petals. This is a compact, bushy, extremely free flowering shrub that is a "must" for every garden. The foliage is a glossy, deep green. The whole plant is a sensational improvement over the older varieties. Husky 1½ to 2-foot plants, \$1.75 each; 3 for \$4.75.



Honeysuckle, Zabelli

### HONEYSUCKLE (*Lonicera*)

**Pink Tartarian.** 8 feet. Lovely pink blooms nestled in the deep green leaves, cover this shrub with glory in early May. Bright red berries in the late summer. Grows tall and symmetrical. A fine accent plant. 2 to 3 ft., \$1.00 each.

**Zabelli.** (New Red Honeysuckle.) 6 feet. A marvelous new improvement and the most shapely bush of all the Honeysuckles. Grand deep green foliage enhances these unsurpassed glowing red flowers, which are made especially brilliant by the wealth of deep golden stamens. Exceedingly profuse in bloom. Brilliant red fruits in the summer. The picture hardly does it justice. 1½ to 2 ft., 85c each; 3 for \$2.25. 2 to 3 ft., \$1.10 each. 3 to 4 ft., \$1.50 each.



See

Page 25

for

Cole's

Ground

Cover

Plants



### HYDRANGEA

**Cole's New Blue Hydrangea.** 3 feet. Huge blue flowers like the greenhouse variety—yet hardy outdoors. We believe it to be the very best blue variety. Needs acid soil for best color. Summer. Spring planting only. Heavy, 2-year plants, \$1.50 each; 3 for \$4.00.

**Peegee Hydrangea** (*Paniculata Grandiflora*). A very well known variety, immense white, conical bloom heads, 12 to 18 inches long, with pink shadings, become pink and red as the flower ages. Prune severely in spring for largest flowers. Very hardy. August and September. 1½ to 2 ft., \$1.00. 2 to 3 ft., \$1.25 each.



### FORSYTHIA

#### (*Golden Bell*)

**Spectabilis.** 7 feet. It is useless for us to take space to describe this magnificent, well-known shrub. Everyone knows of its beauty and its faithfulness as to bloom. 18 to 24 in., 75c. 2 to 3 ft., \$1.00. 3 to 4 ft., \$1.25.

**Ovata.** 4 feet. The newest and prettiest Golden Bell. Grows in a very compact, oval shape. Here is a Forsythia that can be, and is, best used as a specimen plant. Came to us from mysterious Korea. Magnificent sprays of bright yellow, sweetly scented flowers during February and March, even in freezing weather. 1½ to 2 ft., \$1.00 each; \$2.50 for 3. 2 to 3 ft., \$1.50 each; \$3.80 for 3.

### DWARF WINGED BURNING BUSH

#### (*Euonymus alatus compacta*)

(Shown in fall coloring.)

4 feet. A choice, rare, compact shrub, noted for its unbelievable brilliance of foliage and fruit in the autumn, and unique cork-winged bark. Does well in partial shade or sun. 15 to 18 in., \$1.15. 1½ to 2 ft., \$1.50.

### A COLE SUPER SPECIAL

#### Cole's Junior Shrubs

We have had many requests for smaller size shrubs by people who have large plantings to make and are limited as to expenditure. Others take great joy in watching the smaller plants grow and in training them to desired forms. We offer 10 fine shrubs, our selection, including Everblooming Daphne Lilac and New Everblooming Pink Spirea at a price anyone can afford. Smaller in size, they are of equal quality to others listed in the Garden Guide. Think of it, 10 Shrubs, a \$6.00 to \$8.00 value.

**Special \$4.35**



# America's Finest LILACS

(*Syringa*)

The finest of the old faithfuls as well as the best of the newcomers. America's favorite flowering shrub at its best.

**Persian** (Persica). 9 feet. Loads of rosy purple, extremely fragrant flowers clothe a broad shapely bush in May or June. Ideal for hedges or specimen use. 2 to 3 ft., \$1.25 each; \$7.50 for 10. 3 to 4 ft., \$1.60 each; \$9.75 for 10.

**Everblooming Daphne-Lilac** (Microphylla.) This most graceful shrub is a prolific bloomer. The dainty, pinkish red buds open to a pink and lilac shade. Its fragrance is delicious. A heavy crop of blooms in May and June, and then at intervals all summer. Thick, dainty foliage. 1½ to 2 ft., \$1.50. 2 to 3 ft., \$2.00 each.

## COLE'S PEERLESS FRENCH HYBRID LILACS

Each year Cole tries to offer you the standouts of their great Lilac plantings. This year we have dropped one of the old ones and added a new one. We call your attention particularly to Jan van Tol.

**Belle de Nancy.** Double; satiny pink.

**Gaudichaud.** Double; mammoth deep lilac.

**Gloire de Lorraine.** Double; heavenly blue.

**Jan van Tol.** Enormous panicles of single, pure white florets. The finest white.

**La Tour d'Auvergne.** Double deep red.

**Pink Hyacinth.** Huge, very fragrant double pink.

**Souv. de Ludwig Spaeth.** Deepest red.

Prices all varieties: 1½ to 2 ft., \$1.00. 2 to 3 ft., \$1.40 each.

## A COLE SUPER SPECIAL

All 7 New Hybrids—  
1 of each:  
1½ to 2 ft. plants—value \$7.00. SPECIAL \$6.00  
2 to 3 ft. plants—value \$9.80. SPECIAL \$8.50



Gloire de Lorraine



NEW HYBRID GOLDEN CHAIN  
(*Laburnum Vossi*)

A new hybrid with extremely long clusters. Flowers are of a pure golden yellow, very similar in form to those of the well-known Wisteria. The hanging clusters are as much as 18 to 20 inches in length and appear profusely in late spring. Grows well in partial shade or full sun. Decorative green bark and huge, novel, clover-like leaves. June. Heavy, 4 to 5 ft., \$4.50.

## Two Extremely Fragrant Shrubs

### SWEET SHRUB (*Calycanthus*)

5 feet. A very unique shrub, neat and upright growing. Strong, reddish brown branches are clothed with large, glossy leaves. Handsome, odd, double, spicily fragrant flowers of deep chocolate-red are produced in prodigious quantities in early spring. 1½ to 2 ft., \$1.00.

### SUMMER SWEET (*Clethra*)

4½ feet. The sweetest of all. White flowers, with an intensely sweet, spicy fragrance, appear late in the summer on long spikes. Excellent for cutting. Thrives in shade and moist places. 1 to 1½ ft., 85c. 1½ to 2 ft., \$1.10 each.



ROSE-ACACIA (*Robinia*)

7 feet. An elegant shrub with long, graceful clusters of pea-shaped, rose-colored flowers in May and June, often later. Will grow anywhere. Foliage is very decorative, like that of a Wisteria. 2 to 3 ft., \$1.25 each.



Virginal  
Mock Orange

## MOCK ORANGE

**Cole's Glorious.** 8 ft. Considered the finest Mock Orange. Erect, bushy habit with massive, leathery, glossy green leaves. Produces white flowers which surpass any other Philadelphia in size and beauty. A truly beautiful shrub. June. 1½ to 2 ft., 90c. 2 to 3 ft., \$1.25. 3 to 4 ft., \$1.75 each.

**Virginal.** 7 feet. Heavy, double, large white flowers in great profusion, exquisitely fragrant. Very useful for accent planting. June throughout the summer. 1½ to 2 ft., 85c. 2 to 3 ft., \$1.15. 3 to 4 ft., \$1.50 each.

## VITEX (*Chaste Tree*)

**Macrophylla.** A very desirable, dainty branching shrub that bears a summer-long display of beautiful, long spikes of rich lavender-blue flowers. Large, starlike foliage, silvery green. Late July through September. Heavy, 2-year plants, \$1.00 each; 3 for \$2.50.

## A COLE SUPER SPECIAL

### SHRUBS FOR THAT SHADY CORNER

Do you have a corner in your garden where it is difficult to make things grow because of its shaded position? For the many people who have that situation, we offer

the following collection of fine landscape shrubs. They are selected to give you the maximum of spring bloom, summer foliage, fall coloring, as well as winter attractiveness in berries. Space does not permit a detailed description of each of these, but our experience in the growing of landscape shrubs assures your satisfaction.

- Acanthopanax Sieboldianus**
- Hamamelis Virginiana**
- Euonymus Europaeus**
- Ilex Verticillata**
- Philadelphus Coronarius**

As a Special Offer, we will furnish these five shrubs in a heavy, 3- to 4-ft. size, for \$4.25.

This is without doubt one of the biggest bargains in our catalog. They are at least a \$7.50 value.



# Magnolias



Magnolia  
Soulangeana Nigra

**Glauca** (Sweetbay). 14 feet. The rich, sweet fragrance of the cream and yellow flowers has been recalled by the poets of the ages. The foliage of long, leathery, shining green, bay leaves, forms an ideal background for the large blooms and bright red clusters of seed which follow. A favorite variety because of its rare charm. Spring planting only. 2 to 3 ft., \$3.00.

**Soulangeana Nigra** (Purple Saucer Magnolia). 15 feet. The huge deep purple and white Waterlily-like flowers are of exotic beauty. Often 8 inches across, they are more prominent because they appear before the leaves. The foliage of long, leathery leaves provides a restful mass of cool green for the summer. Spring planting only. 15 to 18 in., \$3.50 each.



Magnolia  
Glauca

## The Spireas

**Anthony Waterer.** 2½ feet. The crimson everblooming Spirea. A beautiful sight with large, flat, crimson flowers against dense, dark green foliage. Blooms continuously during summer. Ideal for foundation, low hedge, or border. July to September. 15 to 18 in., 75c each; 3 for \$2.00; 10 for \$6.00. 1½ to 2 ft., \$1.00 each; 3 for \$2.50; 10 for \$7.50.

**Bridal Wreath** (Van Houttei). 7 feet. A mass of pure white bloom in spring, Bridal Wreath still holds top rank because of its beauty and ability to withstand adverse growing conditions. Excellent for

large hedge, screen, or border planting. 1½ to 2 ft., 70c each; 10 for \$5.50; 25 for \$11.00. 2 to 3 ft., 90c each; 10 for \$7.00; 25 for \$14.00. 3 to 4 ft., \$1.10 each; 10 for \$8.50; 25 for \$17.00.

**New Everblooming Pink Spirea** (Menziessi Macrothyrsa). 5 ft. The finest pink Spirea ever introduced. Enormous spikes of cameo-pink flowers, 8 to 10 inches long, produced on strong, willow stems. Clusters of secondary spikes follow, and by cutting old flowers, plant blooms all summer. Last two weeks as cut flowers. Excellent foliage and form. 2 to 3 ft., \$1.00 each; 3 for \$2.50. 3 to 4 ft., \$1.35 each; 3 for \$3.50.

**White Spray Spirea** (Thunbergii). 4½ feet. A mass of pure white bloom in spring. Long, arching branches bear great sprays of white, jewel-like flowers. Dense, elongated foliage; well-rounded shape. 2 to 3 ft., 90c each; 10 for \$7.00.



New Everblooming Pink Spirea



Bridal Wreath



**SMOKE TREE** (*Rhus Cotinus*)

A tall shrub that grows 10 feet high and 7 or 8 feet wide. Its blooms, from June through August, are just like big puffs of purple smoke. Train it as either a tree or shrub. One of our most attractive plants with its brilliant fall foliage. Grows in sun or semi-shade; not too particular as to soil. 1½ to 2 ft., \$1.00. 2 to 3 ft., \$1.35 each.

## THE VIBURNUMS

**Americanum** (American Cranberry Bush). 8 feet. Heavy and upright in growth. Large, deep green foliage and huge panicles of white flowers, followed by bright red berries in the autumn. Will thrive in partial shade. 2 to 3 ft., \$1.00.

**Burkwoodi.** New, fragrant evergreen Viburnum. 5 feet. A new shrub that grows in a perfectly round, ball shape. Leathery green leaves stay on nearly all winter long. In early spring it bears armloads of fragrant, blush-white flowers of honeyed, carnation-like fragrance. Sometimes is called the Gardenia-flowering Viburnum because of its exquisite odor. A sensational jewel for every garden. 12 to 18 in., \$2.90 each; \$5.00 for 2.

## WEIGELA

**Rosea** (Pink Weigela). 7 feet. Light rose-pink flowers in great masses during the spring and early summer. A beautifully symmetrical bush. Strong and bushy always. 2 to 3 ft., 85c. 3 to 4 ft., \$1.10 each.

**Vanicek's Ruby-Red.** The new red Weigela. 6 feet. The finest new red. The bloom is extremely prolific and its color is that most desirable bright ruby-red. Colorful, insect-free foliage on upright, symmetrical plant. Flowers brilliantly from May to July. 1½ to 2 ft., 85c.



**New Tamarix, SUMMER GLOW**

6 feet. Bright wine-red flowers against lovely gray-green foliage provides the coloring of one of our loveliest shrubs. Blooms profusely throughout the summer. Excellent for cutting. 2-year plants, \$1.10 each; \$2.75 for 3.



Viburnum Burkwoodi





Bechtel's Flowering Crab

# Flowering and Ornamental

Chosen for beauty of foliage as well as flower and excellence of growth habits. A necessity in your garden picture. May be used as lawn specimens or massed effects. Most of those listed are suitable for smaller city lots as well as larger estates.

**CULTURAL HINTS:** Plant in same manner as used for shrubs. Always dig the hole "too large." Prune **more** than you think necessary. Flowering Cherries and Magnolias will not stand wet spots. Willows and Birches love them.

For best success, Flowering Trees must be planted in early spring.

## FLOWERING CRABS

**Rose Flowering Crab** (Floribunda.) 10 feet. A wealth of exquisite rose-colored flowers fully cover the tree in spring. Small, yellow fruits, in generous clusters, follow in the late summer. Exceedingly graceful and colorful. Especially fragrant. 3 to 4 ft., \$1.50. 5 to 6 ft., \$3.00.

**Bechtel's Double Flowering Crab** (Ioensis Plena). 10 ft. Large, double pink, roseline flowers of rare beauty. Neat, stiff, pyramidal growth. Will grow and thrive in almost any location. 3 to 4 ft., \$1.75. 4 to 5 ft., \$2.75 each.

**Red Flowering Crab** (Hopa). 10 feet. One of the loveliest of all varieties. Makes a broadly compact tree, covered in the spring with showy, rose-crimson flowers and a sensation in the fall with its gorgeously tinted large red fruits. Free from most pests and really a sensation in the landscape effect. 3 to 4 ft., \$1.50. 5 to 6 ft., \$3.00 each.



## NEW RED-LEAF MAPLE

**Oshiu Beni.** A new, decided improvement over the common Blood-Leaf Maple. Its ornamental beauty and charm are intensified by the deep, solid red foliage which holds a brilliant shade all summer. The rounded form is densely furnished with leaves to the ground, its specimen value is unlimited. Spring planting only, 12 to 15 inches, very well branched, \$2.00 each; 2 for \$3.85.

## FLOWERING CHERRIES

Nothing is equal to the breath-taking display of their early spring bloom. Have the beauty of Washington's Tidal Basin planting in your own yard. Spring planting only.

**Fugenzo** (Kofugen). 18 feet. Large, extremely double, exquisitely shaded deep pink flowers. Foliage is coppery red.

**Sekiyama** (Kwanzan). 18 feet. Attractive, large, double, dark rose-pink flowers. Very vigorous branching habit. Quick growing.

Prices above varieties: Thrifty, young trees, 2 ft. and up, sure to grow, \$2.00 each; 1 of each for \$3.75. Heavy, 5- to 6-ft. trees for those desiring a quicker landscape effect, \$4.75 each; \$9.00 for 2.

### Sensational New AUTUMNALIS

12 feet. New Autumn-Flowering Cherry. Handsome, semi-double, lively pink flowers appear liberally in April and again in October. Presents an unsurpassed picture during both its blooming periods. Spring planting only. Thrifty, young, 3-ft. trees, sure to grow; \$2.75 each; \$5.00 for 2. Heavy, 5- to 6-ft. trees for those desiring a quicker landscape effect, \$5.00 each; \$9.50 for 2.



American Elm

## A COLE SUPER SPECIAL SHADE TREES

We offer a selection of our finest shade trees. All have been transplanted and root-pruned for easy transplanting and selections may be made from this list to fit almost any place in the landscaping picture from street planting to garden corners and backgrounds. All are protected by Cole's guarantee listed on page 2, and are normally priced at from \$2.50 to \$5.00 each. Make your selections early as they will not last long at these prices. For large sizes and other varieties, request "Cole's Green Book."

**American Elm.** Familiar; stately. 5 to 6 ft.

**European Plane.** Fine for town and city. 5 to 6 ft.

**Golden Weeping Willow.** Perfect for the garden nook. 4 to 5 ft.

**Little Leaf Linden.** Grows to a perfect pyramid. 4 to 5 ft.

**Marcel Willow.** A distinctive novelty. 5 to 6 ft.

**Pin Oak.** One of the best shade trees. 5 to 6 ft.

**Tulip Tree.** Grandest of native trees. 5 to 6 ft.

**Sugar Maple.** A tried and true favorite. 5 to 6 ft.

**Sweet Gum.** Famous for fall foliage. 4 to 5 ft.

Price of the above: \$2.00 each; any 3 (your selection), for \$5.25. One each of the above 9 varieties for \$14.25.



## NEW DOUBLE PINK WEEPING CHERRY

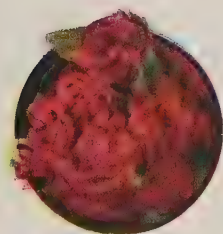
10 feet. Graceful arching and weeping branches are a solid, glowing mass of dazzling, double dark pink flowers before the leaves appear. An amazingly beautiful sight to behold. 5 to 6 ft., grafted, \$4.90 each.



# Trees



Red Flowering Dogwood



## PAUL'S DOUBLE SCARLET HAWTHORN

14 feet. The branches of this double-flowered form of the famous old Hawthorn are heavily laden with a mass of double, scarlet-crimson flowers. The fine foliage and picturesque, irregular form are pleasing during other seasons of the year. 4 to 5 ft., \$3.75 each; \$6.25 for 2.



## MOUNTAIN ASH

(*Sorbus Aucuparia*)

Clusters of flashy, orange-red berries in late summer and fall. Large clusters of pure white flowers in spring. Dense, pyramidal growth up to 25 feet. Heavy rooted, 6 to 8 ft., \$3.50 each; 2 for \$6.50.



## Double Pink ROSE TREE (*Prunus Triloba Plena*)

7 feet. Dazzling, double-quilled pink flowers present a floral display completely hiding the long, graceful branches. Blooms in early May before the leaves appear. They are fine for cutting, making beautiful large bouquets. Use it as a specimen for lawn planting or in the shrub border. 4 to 5 ft., \$2.90 each.

## FLOWERING DOGWOOD

**Red Flowering Dogwood** (*Cornus florida rubra*). 14 feet. Known the country over for its great quantities of large, single, light red flowers. Its artistic and sturdy growth has great decorative value. Spring planting only. 2 to 3 ft., \$3.50. 3 to 4 ft., B&B, \$5.90.

**White Flowering Dogwood** (*Cornus florida*). 18 feet. Unusual beauty and graceful charm. Flowers are white followed in late summer and early fall by a wealth of bright red berries, providing a striking color note and food for the birds. Does well in either shade or sun. 2 to 3 ft., \$1.75 each. 3 to 4 ft., \$2.50 each.

## CUT-LEAF WEEPING BIRCH

35 feet. A very beautiful and ornamental tree. Graceful weeping branches, finely cut foliage, and bright shiny white bark. Even in the winter, when the foliage is off, they are striking. Not too particular as to soil, but likes a sunny spot. 4 to 6 ft., \$2.65 each; \$5.00 for 2.

## RED BUCKEYE—A Rare Tree (*Aesculus Pavia*)

Heavy exotic foliage and intense blood-red blooms make this truly an outstanding specimen for the garden. The mature tree grows to a compact, regular shape of about 20 feet, literally covered in the spring with the gorgeous blossom clusters. They start to bloom at about 1½- to 2-ft. size and never omit a year thereafter. The foliage color is of excellent deep green in the summer with a magnificent display of gold in the fall. Fruits are attractive. We offer trees that are quite likely to bloom the first year and will surely bloom the second year. One of the greatest bargains in our catalog. 2 to 3 ft., \$4.75 each; 2 for \$8.50.



## NEW PURPLE-LEAF PLUMS

**Thundercloud.** 12 feet. The finest scarlet-leaf Plum ever sold. Distinct foliage is deep, solid red throughout. You will never forget the sight of Thundercloud in bloom. Great masses of rosy pink flowers burst forth just as the leaves begin to unfold. Plant one of these and we feel certain you will agree that it is one of the most effective specimens in your yard. Fine 4- to 5-ft., branched trees, \$2.50 each; 2 for \$4.50.

**Royal Purple.** 10 feet. A new, dwarf tree having the richest, darkest purple foliage and branches of all purple-leaved plants. Pink flowers in spring are followed by wine-red fruits in summer. A very beautiful, useful tree that adds a distinctive touch to any lawn or border planting. 4 to 5 ft., \$2.25.



Evergreen Bittersweet

## Selected GROUND COVERS

### EVERGREEN BITTERSWEET (*Euonymus*)

**Radicans.** (Wintercreeper.) A fine, spreading evergreen vine. Very glossy, leaves compactly matting; pink fruit. Great for covering rocky banks, rough walls, tree trunks, etc.

**Radicans Colorata.** (Red-Leaf Wintercreeper.) Large, round, glossy leaves and rapid spreading growth, rooting every place it touches the ground. Good for retaining difficult banks or as a low growing vine, either in sun or partial shade. Dark green foliage turns bronzy red during autumn and in the winter.

9 to 12 in., 60c each; 3 for \$1.50; 10 for \$4.00. 15 to 18 in., 85c each; 3 for \$2.25; 10 for \$6.50.

### WINTERGREEN

One of the most attractive ground covers known, for use with Evergreens, Rhododendrons, and Azaleas. In the spring they are plentifully supplied with dainty white flowers and in the late summer and fall with attractive, fragrant red berries. Plant a few clumps under your foundation planting 1 foot apart. Grow in sun, but prefer shade. 6 inches. Clumps, \$1.00 for 3; \$2.75 for 10.

Plant these in the bare spots of your lawn where grass just doesn't seem to grow. Put them around trunks of trees and on banks that wash. All are very fast growing and require a minimum of care; fine in deep shade.

**CULTURAL HINTS:** Most ground cover plants should be handled in a manner similar to that used for perennials. Rich, friable soil is always desirable, but the Evergreen Bittersweet and the Myrtles will do well in almost any soil. Pachysandra and Wintergreen both prefer a definitely acid (sour) soil. Spring planting only.

### MYRTLE (*Vinca*)

**Minor.** A trailing evergreen ground cover used widely in shady places. Will thrive where many another plant will not grow. Small, thick, glossy green leaves and blue flowers. Spreads rapidly. Plant from 8 to 10 inches apart. 2-year, field-grown, \$2.00 for 10; \$4.25 for 25; \$14.00 for 100.

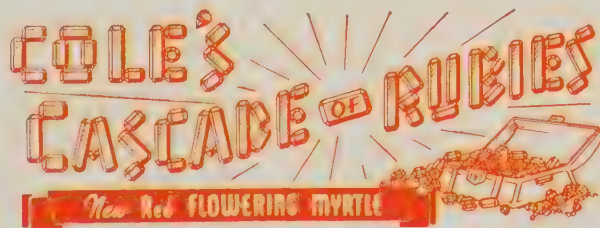
**Bowles' Variety.** (Improved.) A new variety having runners which do not brown off. Leaves of stronger texture. Flowers are large, bright Eleanor-blue, produced in wild profusion in early spring with a sprinkling of bloom all summer. Strong plants, \$3.00 for 10; \$6.00 for 25; \$21.00 for 100.

### PACHYSANDRA

**Terminalis** (Spurge). Considered the most satisfactory ground cover. Widely used in shady locations and rockeries, as it forms a dense carpet that is glossy green the year around. Also makes a very neat, clipped, dwarf edging. 6 to 8 inches high. Heavy, field-grown, \$2.40 for 10; \$5.00 for 25; \$17.50 for 100.

**Hall's Honeysuckle.** (See page 19.)

Myrtles. It thrives in either full sun or shade. Grows rapidly to form a solid mass. May be trimmed at the edges to formal shapes, but its uniform height requires no trimming. Height about 4 inches. For quick effect, plant 15 inches apart. \$2.00 for 5; \$8.75 for 25; \$30.00 for 100.



(*Vinca minor rubra*)



# Cole's Selected FRUIT TREES

For several generations the Cole Nursery has specialized in the improvement and production of selected varieties of proven fruitage. Those listed below comprise the best strains for home planting as well as for commercial orchardists. All fruit trees and small fruits are exempt from the Ohio sales tax.

**CULTURAL HINTS:** Same general planting methods as for trees and shrubs. Space Apples 35 ft. by 35 ft.; Cherries, Plums, and Apricots 25 ft. by 25 ft.; Pears, Peaches and Nectarines 20 ft. by 20 ft. Prune heavily after planting. Remember, no wet spots for Cherry trees—they can't take it. Plums will stand the wettest ground of any fruits.

## APPLES

Numbers following the name indicate order of fruit ripening.

- ✓ **Baldwin.** (10.) Winter. Large, very dark red fruit. Flesh crisp and juicy. Mild and sub-acid flavor. A leading cooking Apple.
- ✓ **Red Delicious.** (6.) Winter. The flesh is tender, fine grained, yet crisp, melting and very juicy.
- ✓ **Jonathan.** (4.) Late fall. Brilliant red underlaid with yellow. Medium-sized fruit with yellow flesh. One of the best in appearance and quality.
- ✓ **McIntosh.** (3.) Fall. Beautiful deep crimson fruit of the highest quality. Tender, juicy, white flesh of the finest flavor. Tops for cooking and eating.
- ✓ **Red Northern Spy.** (7.) Winter. A distinct new type, larger than the old Northern Spy. A bright, solid red with juicy, mild, rich flesh. Fine for eating and cooking.
- ✓ **Rhode Island Greening.** (9.) Winter. The most popular green cooking Apple for

winter use. Fruit large and juicy, green with dull red bluish. Pleasant rich, acid taste. Excellent keeper.

✓ **Stayman's Winesap.** (8.) Winter. A leading commercial variety with yellow fruit overlaid a dull red. Large. Flesh is crisp and juicy; spicy flavor. Good for cooking and eating.

✓ **Wealthy.** (2.) Fall. Yellow fruit striped red. White flesh, juicy and vinous. Fine for home and market use. The favorite early fall Apple for cooking and eating.

✓ **Yellow Delicious.** (5.) Winter. Same delicious quality as regular Delicious, but the color is a clear bright yellow. Tastes more mild and even better than Grimes Golden. Firm, crisp and very juicy.

✓ **Yellow Transparent.** (1.) Summer. Hardy, very productive trees. Medium sized, pale yellow fruit. Flesh white, tender, juicy, sub-acid. A great variety for apple sauce.

### Standard 2-Year-Old Trees:

	Each	5
5 to 6 ft., 11/16 in. cal. and up	\$1.75	\$7.00
4 to 5 ft., 9/16 in. to 11/16 in. cal.	1.50	6.00

5 rate applies only to 5 of 1 variety.

## DWARF APPLES

For the family garden where there is not space to have a variety of standardized apple trees, nothing is of quite such value as the Dwarf Apple trees. These will reach a mature height of from 7 to 8 feet and about equal spread. They will come into bearing 2 to 3 years after planting and are just about as long-lived as the Standard Apple trees. The fruit is absolutely identical to that on the Standard Apple trees, except that quite often it is a little larger and will ripen a little earlier. In addition to producing valuable fruit, these trees are a

thing of beauty in the spring. A number of orchardists throughout the country are making plantings of Dwarf Apples because of the ease of picking and quickness of coming into bearing. We offer sturdy, thrifty trees, 3 ft. tall in the following varieties:

- Jonathan
  - McIntosh
  - Double Red Delicious
  - Stayman's Winesap
  - Yellow Transparent
- \$2.50 each; \$10.00 for 5.



Montmorency



Black Tartarian



McIntosh  
The Finest All-Purpose Apple



## APRICOT

Spring Planting Only.

- ✓ **Hungarian.** A very fine variety which has been tested and has borne heavily along the shores of Lake Erie for a long period of years. Grows to large size, the fruit large and of good quality; deep yellow with gold flesh. Very fine flavor. 5 ft., 11/16 in. cal., \$2.00 each. 4 ft., 9/16 to 11/16 in. cal., \$1.75 each.

## CHERRIES

Spring Planting Only

- ✓ **Black Tartarian.** Sweet. The best of the early sweet Cherries for home and local market. Very large black-red, juicy, rich fruit. A robust, disease-resisting tree.
- ✓ **Napoleon (Queen Anne).** Large, pale yellow, almost white fruit with brilliant red cheek. Flesh is white, firm, juicy, sweet and of the highest quality. A very choice canning variety.
- ✓ **Montmorency. Sour.** Most popular sour Cherry. Large red fruit; firm, reddish yellow flesh. Abundantly productive. Pleasantly tart.

PRICE OF	}		Each	5
ABOVE TWO		5 to 6 ft., 11/16 in. cal. . . .	\$2.50	\$11.00
SWEET CHERRIES:		4 to 5 ft., 9/16 to 11/16 in. cal.	2.20	9.50

	Each	5
4 to 5 ft., 11/16 in. cal. . . . .	\$2.00	\$9.00
3 to 5 ft., 9/16 to 11/16 in. cal.	1.75	7.50





Red Delicious Apple



## PEACHES

Spring Planting Only

Numbers following the name indicate order of fruit ripening.

- ✓ **Cumberland.** (2.) A white Peach of indescribable quality. Ripens somewhat later than Champion, and is a little larger. Probably the juiciest Peach known. In color, it somewhat resembles Champion with a little more red on the cheek.
- ✓ **Elberta.** (5.) September. The most popular Peach grown. Large, orange-yellow fruit overspread red. Flesh highly yellow, juicy, very firm.
- ✓ **Golden Jubilee.** (1.) August. Now considered the best early freestone. Skin is yellow blushed red; flesh yellow, juicy, tender and sweet.
- ✓ **Hale-Haven.** (4.) A great new yellow market Peach. Its high color gives it a great market value, and it packs and ships without loss. Rich flavor.
- ✓ **Rochester.** (3.) One of the finest flavored of all yellow freestone Peaches. Medium size. Trees strong growing, prolific bearing.
- ✓ **South Haven.** (6.) August. Large yellow Peach with a red blotch. Fine flavor. Flesh is yellow, juicy, of best quality.

Price of Peach Trees:

	Each	5
3½ to 5 ft., 9/16 to ¾ in. cal. ....	\$1.50	\$6.00
3 to 4 ft., 7/16 to 9/16 in. cal. ....	1.25	5.00

5 rate applies only to 5 of 1 variety.

## PEARS

- ✓ **Bartlett.** The most popular Pear. Large fruit, with clear yellow, finely grained, juicy flesh. Highest quality. September.
- ✓ **Cayuga.** A wonderful new Pear has come to us highly recommended by the New York State Experiment Station. It is derived from Seckel and has Seckel's shape, color and fine-grained, delicious flesh, but size compares with Bartlett.
- ✓ **Clapp's Favorite.** A splendid Pear resembling Bartlett and ripening two

weeks earlier. Very large, yellow and dull red. Flesh is juicy, fine-grained, with a melting, delightful rich flavor. For best results pick while still firm. August.

- ✓ **Seckel.** The Sugar Pear. The standard for excellent quality. Medium sized, rich, yellowish brown. Flesh fine-grained with spicy honey flavor. Finest for pickling. October.

Price of Above Pears:

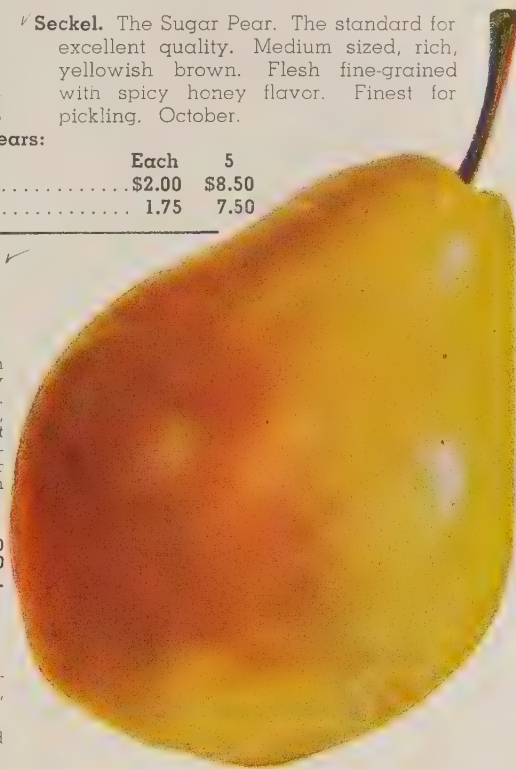
	Each	5
5 to 6 ft., 11/16 in. cal. and up .....	\$2.00	\$8.50
4 to 5 ft., 9/16 to 11/16 in. cal. ....	1.75	7.50

### New! Seedless Pear

(Plant Patent Applied For.)

While this Pear resembles the Bartlett in shape, size and color, it possesses many qualities which the Bartlett does not have. Being **seedless and coreless**, there would, naturally, be no core-rot so prevalent among other varieties. Shows great resistance to the fatal fire blight and other weaknesses. Ripens 10 days later than Bartlett. Delicious, sprightly flavor.

	Each	5
5 to 6 ft., 11/16 in. cal., up ...	\$2.25	\$10.00
4 to 5 ft., 9/16 to 11/16 in. cal.	2.00	8.50



New Seedless Pear

## PLUMS

- ✓ **Abundance.** A large, Oriental type, very hardy and productive, bearing an early and profuse crop of large, pinkish red fruits. Juicy, sweet.
- ✓ **Fellenberg.** (Italian Prune.) Good size, highly colored purple. Flesh firm, juicy, delicious. Freestone.
- ✓ **Lombard.** Medium, violet-red, sweet, rich flavored, hardy and productive. A leading market variety because of its varied uses.
- ✓ **Stanley.** A great, new superior Prune, which has already become very popular both commercially and in the home orchard. Large fruit, sweet and juicy. Trees hardy and very productive.

	Each	3
5 to 6 ft., 11/16 in. cal. and up	\$2.00	\$5.50
4 to 5 ft., 9/16 to 11/16 in. cal.	1.75	4.75



Hale-Haven



# COLE'S Bush and Vine FRUITS



## BLACKBERRY

**Eldorado.** Hardy, productive, and of sweet, melting flavor. Very large, jet-black berries borne in generous clusters. Firm, juicy, rich. Plant 3 feet apart. \$1.10 for 5; \$3.00 for 25; \$10.00 for 100; \$40.00 for 500.

**CULTURAL HINTS**  
Mostly prefer well-drained, fertile, sandy, loam soils. Grapes will do well in clay. Blueberries need special treatment. (See description.) Use same general planting methods as for shrubs and perennials. Plant in spring only.

## The New Thornless BOYSENBERRY

The newest development in the most delicious berries you have ever eaten. Prodigious crops of rich, tangy, juicy fruit borne on canes smooth as velvet. New Thornless Boysenberries ripen from 10 days to 2 weeks earlier than the older types. The flavor—a combination of Raspberry, Dewberry, and Loganberry all packed into huge fruits nearly 2 inches long—makes them excellent for pies, canning and desserts. Their high sugar content makes them most desirable during the present day sugar shortage which will probably be with us for several years yet. \$1.20 for 2; \$2.40 for 5; \$6.50 for 25; \$22.00 for 100.



Niagara



## GRAPES

**Caco.** Large, red fruit of juicy flavor makes this variety very desirable. Midseason. 2-yr. No. 1, 60c each; \$1.35 for 3; \$4.00 for 10; \$17.50 for 50.  
**Concord Blue.** The world's favorite big blue Grape. Large bunches of big, sweet, juicy, deep blue berries. Midseason. A tremendous producer. No. 1, 50c each; \$1.20 for 3; \$3.50 for 10; \$15.00 for 50.  
**Concord Seedless.** New. The first successful hardy seedless Grape. The deep blue color of Concord, its good sized berries, delicious flavor and richness, but absolutely has **no seeds**. A decided advantage for canning. 1-yr. No. 1, \$1.00 each; \$2.50 for 3; \$7.50 for 10.  
**Fredonia.** The earliest fancy blue-black Grape for market. Produces a heavy crop of large bunches and large berries. Pungent, spicy, delightful flavor and fragrance. Vines are hardy and young bearers. Good commercial variety. Early midseason. 1-yr. No. 1, 60c each; \$1.35 for 3; \$4.00 for 10; \$17.50 for 50.  
**Golden Muscat.** New. A fancy, large, amber-white Grape with a different, very pleasing aromatic, muscat-like flavor. Generous bunches of large, meaty berries. An excellent keeper and shipper. Late. 1-yr. No. 1, \$1.00 each; \$2.50 for 3; \$7.50 for 10.  
**Niagara.** The most popular white variety. It can be depended upon to yield enormous quantities every year. The large, round berries are borne in huge, compact bunches and have an exquisite, sweet, mild flavor. Midseason, No. 1, 55c each; \$1.30 for 3; \$3.80 for 10; \$16.00 for 50.



## RASPBERRIES

**New Logan.** (Black.) A glossy black variety of immense size. Very profitable. Fruit firm and sweet. Midseason. \$1.15 for 5; \$1.75 for 10; \$3.00 for 25; \$10.00 for 100; \$45.00 for 500.  
**Latham.** (Red.) Very popular and perhaps the most profitable of all Raspberries. Perfectly hardy, needing no protection. Fruit is a rich, brilliant red; large, and mosaic-free. Very high quality. Midseason. \$1.15 for 5; \$1.75 for 10; \$3.00 for 25; \$10.00 for 100; \$45.00 for 500.  
**Taylor.** Undoubtedly the most promising new red Raspberry. Large, long, attractive bright red berries. Thick flesh, firm, and of the best flavor. Vigorous, hardy, productive, and tall growing. \$1.20 for 5; \$1.85 for 10; \$3.25 for 25; \$11.00 for 100; \$50.00 for 500.

## BLUEBERRIES

### New Hybrid Varieties

Until very recently Blueberries were known only as a wild fruit. Lately, however, hybridizers have succeeded in crossing the fruiting varieties with one which has been known only as an ornamental shrub. The resulting Hybrid retains the beauty of the parent plant and produces fruit of a size much larger and more delicious than found in the native state. Foliage is very lustrous and beautiful. Grow 4 to 5 feet tall. For best success in growing, be sure to use Cole's Acid Peat Humus.

- Pioneer.** Good sized berries of grand flavor. Attractive, shapely spreading bush.
- Jersey.** Late. Largest berries of good flavor. Medium tall. Fine yield.
- Ranccocas.** Early midseason. Bush tall and well formed. An excellent producer of fine quality, light blue berries.
- Rubel.** Late. Tall, well-shaped bush with attractive foliage. Produces an abundance of slightly tart, high quality berries.

	Each	3	10
2-yr., 12 to 15 in. ....	\$1.30	\$3.30	\$10.00
3-yr., 15 to 18 in. ....	1.75	4.50	14.00
3-yr., 1 1/2 to 2 ft. ....	2.25	6.00	18.00

Quantity rates apply to full quantity of one variety only.

**Special:**

	3	10
Assorted, 12 to 15 in. ....	\$3.60	\$11.00
Assorted, 15 to 18 in. ....	4.80	15.00
Assorted, 1 1/2 to 2 ft. ....	6.70	19.00

More than one variety of Blueberries required to cause successful pollination.

## COLE'S ACID PEAT HUMUS MIXTURE

For Blueberries, Rhododendrons, Broad-Leaved Evergreens, etc. A requisite for successful growing. In planting use following mixture:

**Blueberry Culture.** Three-quarters Cole's Peat, one-quarter soil.

**Azaleas, Rhododendrons, Kalmia, Leucothoe, Pieris.** One-half each. Good for lawns and general top dressing.  
2-bushel bag, \$1.25  
13-bushel bale, 6.00







*New*  
**STREAMLINER**  
*Strawberry* →

The very latest introduction in Everbearing Strawberries. Never have we seen anything like them. The vigorous, prolific plants will bear a good crop **this year** if planted this spring. The large, streamlined berries ripen to a luscious, juicy red all the way through. No grainy cores or hard green tips or spots. The second year, the New Streamliner Strawberry will bear a good crop with the standard varieties and will furnish a rare treat of juicy sweetness from shortly thereafter until frost. **\$1.75 for 10; \$3.50 for 25; \$6.15 for 50; \$10.80 for 100; \$21.60 for 250; \$38.00 for 500.**

## COLE'S STRAWBERRIES

Strawberries will bear next year only if planted in the spring.

**Catskill.** Unusually large, well shaped berries. Really bright red all the way through. Superbly rich flavor and aroma. Midseason.

**Dorsett.** Bright flame-red fruit, fresh and appetizing in appearance. Valuable as a market berry because of its firm flesh and skin. Fine flavor, beautiful shape. Early. Likes heavy soil.

**Fairfax.** A new, early, glossy dark red variety. Produces a heavy crop of berries, better than average size, conical in shape. Firm, sweetly luscious fruits. Early.

**Premier.** The king of berries. Very high quality, glossy red fruit of smooth, evenly conical form. It is large and bears the biggest crop of them all. Midseason.

**Senator Dunlap.** The richest flavor of any Strawberry. Dark red, pointed berries in great abundance. A tremendous yielder, it is great for shipping. Midseason.

Prices Above Varieties: **\$1.15 for 25c; \$1.90 for 50c; \$3.00 for 100; \$6.00 for 250; \$9.50 for 500; \$15.00 for 1000.**

Quantity rates apply to full quantity of one variety only.

### *Everbearing Strawberries*

**A Continuous Crop in the Home Garden.**

**Gem.** A recent important introduction in the everbearing group. Bears soon after the normal spring planting and carries on during the summer with an immense fall crop ending only with the first heavy frost. Glossy red fruits are uniformly large. Carry and keep well. An excellent dessert berry.

**Mastodon.** In great demand. A very prolific bearer. Berries of immense size, deep red, of choice quality. A very strong grower.

**New Everbearing Minnesota 1166.** Truly luscious in appearance as well as taste, unusually sweet, firm, and keeps well. A full fruiting variety, hence very large crops. When planted this spring, this wonderful berry will produce a crop in July and continue until late fall. Next spring these plants begin fruiting with the early June varieties. Then after a short layoff will bear again in late summer until snow flies. Berries are dark and pure dazzling red to the center and no green tips or spots.

Prices Above Varieties: **\$2.25 for 25; \$3.75 for 50; \$6.25 for 100; \$12.50 for 250; \$21.00 for 500; \$35.00 for 1000.**

Quantity rates apply to full quantity of one variety only.

### ASPARAGUS

**Mary Washington Rust-Proof.** Blue blood of the Asparagus world. Large stalks, greenish purple, and tender. Famed for its full, but mild flavor. One of the strongest growers and heaviest producers. **Strong, 2-yr. roots, \$2.00 for 25; \$6.00 for 100; \$13.75 for 250; \$25.00 for 500.**



Mary Washington Asparagus



Strawberry Rhubarb

### HEALTHFUL RHUBARB

**Strawberry.** The finest of the newer varieties of Rhubarb. The deep red stalks of good size and marvelous flavor. The plant produces heavily. When cooked, it becomes a delightful deep pink and requires only about two-thirds as much sugar as the average type of Rhubarb. We grow this variety from divisions, as it cannot be grown from seed. It is consequently somewhat more expensive, but will well repay in crop and quality. **\$1.65 for 3; \$4.50 for 10; \$8.75 for 25.**



# Hedge Plants

## BARBERRY (*Berberis*)

Plant 10 to 12 inches apart.

**Green Barberry** (Thunbergi). 4 feet. The well known and popular Barberry for general use. Famous for its fine fall effect and bright red berries.

	10	25	100
12 to 15 in. ....	\$4.00	\$ 8.00	\$28.00
15 to 18 in. ....	5.00	10.00	36.00
1½ to 2 ft. ....	6.00	12.00	46.00

**Red-Leaved Barberry** (Thunbergi *Atropurpurea*). 4 feet. A beautiful form having distinctive purplish red leaves. Attractive all season. Same growth habits as the Green Barberry. Very useful. Each 10 25 100

12 to 15 in. ....	\$0.60	\$5.00	\$10.00	\$37.50
15 to 18 in. ....	.70	6.25	12.50	47.50

**Truehedge Columberry.** (U. S. Plant Patent No. 110.) Generally conceded to be the finest hedge plant. In addition, it has many other practical uses, such as accent planting, grouping, or in place of the less hardy Arbor-Vitae or Boxwood. Thrives under adverse conditions. It has been tested at 30 degrees below zero and found to be extremely hardy. Boxwood-like foliage; compact, upright form, very thrifty and adaptable. Can be trimmed to secure the Boxwood forms so prevalent in lovely English gardens. As a beautiful, hardy, permanent, instantly finished hedge, it has no peers. Requires only a periodic clipping at the top to form a perfect hedge at any desired height up to 3½ feet.

	Each	10	25	100
9 to 12 in. ....	\$0.50	\$3.80	\$8.25	\$30.00
12 to 15 in. ....	.55	4.30	9.50	35.00
15 to 18 in. ....	.70	5.50	12.00	45.00

## PRIVET (*Ligustrum*)

(Plant 8 to 10 inches apart.)

**Amur River Privet** (Amurense.) 10 feet. Tall, columnar hedge plant with light green foliage. Very hardy. May be trimmed and held at nearly any height and will always retain its upright form.

	10	25	100
12 to 18 in. ....	\$2.50	\$4.75	\$15.00
1½ to 2 ft. ....	3.00	6.00	20.00
2 to 3 ft. ....	3.50	7.00	26.00

**California Privet** (Ovalifolium). 8 feet. Probably the most widely used Privet. A fine hedge variety with upright columnar form. Dense and compact. Lustrous, deep green leaves.

	10	25	100
12 to 18 in. ....	\$2.00	\$4.00	\$14.00
1½ to 2 ft. ....	2.50	5.00	17.00
2 to 3 ft. ....	3.00	6.25	21.00

## BLUE-LEAF ARCTIC WILLOW

(*Blue Osier*)

Very dwarf, compact growth. Foliage is of unusual blue gray-green. Hardy enough to withstand Arctic Circle temperatures. Grows everywhere, even in wet or heavy soils where nothing else will thrive. Creates a beautiful, thick hedge, up to 4 feet tall and can be used favorably as a specimen. Plant 12 to 18 inches apart. 12 to 15 in., 55c each; \$4.00 for 10; \$9.25 for 25; \$35.00 for 100.

## TEUCRIUM (*Midget Hedge*)

Dense, glossy green foliage that resembles dwarf Boxwood. Shiny dark green leaves last long into the winter and come out again quickly in the spring. Can be sheared to any height up to 12 inches. Aromatic, bright lavender-pink flowers appear in July and August. Very hardy. Plant 6 inches apart in full sun. Well-grown plants, \$3.25 for 10; \$6.75 for 25; \$24.00 for 100.



Blue-Leaf Arctic Willow



Truehedge Columberry

### CULTURAL HINTS

Plant in a trench at the depth previously grown. Trim back one-third or more, better two-thirds. Follow same planting methods as for shrubs. Remember—hedges like fertilizer, too.



Teucrium—Midget Hedge



## WHAT HAVE YOU FORGOTTEN ?

Check your order carefully before mailing.

Additional Order Blanks upon request.

Have you included 5% for postage? (See other side)

Visitors are welcome at our New Home two miles West of Painesville,  
one mile North of Route 20 on West Jackson Street.

Another Order

From.....

Address.....

PLACE  
STAMP  
HERE

To:  
THE COLE NURSERY CO.

PAINESVILLE

OHIO

S H R U B S

FRUIT TREES

*“Everything*

*That’s Good*

*and Hardy”*

TREES  
EVERGREENS

P L A N T S

## OUR GUARANTEE

We guarantee all plant material to arrive in good, healthy condition. We are unable to consider any complaints made more than ten (10) days after the receipt of and acceptance of plants. We will replace at one-half (1/2) the listed price any plant, shrub, tree, etc. purchased at the listed price that fails to grow the season following planting. Report must be made before August 1st following.

Plants and other nursery stock sent as ordered, and received in good condition, cannot be returned for credit and we accept no obligation for their return.









SPREADING  
YEWE

HATFIELD  
YEWE

SAVIN  
JUNIPER

GOLDEN PLUME  
CYPRESS

(Not  
Available)

RHODODENDRON

SILVER-BLUE  
PFITZER JUNIPER

DWARF  
YEWE

# Cole's Justly Famous Junior Size Evergreens

We have offered these well-shaped small Evergreens the past three years and they enjoyed such tremendous popularity that we are offering almost the same list this year. Secure a few this spring. Quantities are low and early orders will be given preference, so order now.

Extra husky Evergreens of the desirable varieties. Perfect for immediate use, for setting out to await further maturity, or for planting in window boxes for their decorative effects. These justly famous Junior size Evergreens are 2 to 4 years old, having been twice transplanted to develop masses of fibrous roots. They will quickly become sizeable specimens—doubling and tripling in value. Evergreens can be easily kept to less than half their mature height by judicious pruning. Sent packed in moss. For quantities less than two each, see collection offer at right.

	Mature Height	Per 2	Per 5	Per 10
Pfitzer Juniper. 10- to 12-inch spread	4 ft.	\$1.60	\$3.50	\$6.50
Savin Juniper. 8- to 10-inch spread	4 ft.	1.60	3.50	6.50
Hatfield Yew. 12 to 15 inches	10 ft.	1.60	3.50	6.50
Irish Juniper. 9 to 12 inches	6 ft.	1.60	3.50	6.50
Golden Plume Cypress. 12 to 15 inches	10 ft.	1.60	3.50	6.50
Hicks' Yew. 12 to 15 inches	7 ft.	1.60	3.50	6.50
Spreading Yew. 12- to 15-inch spread	5 ft.	1.60	3.50	6.50
Dwarf Yew. 6 to 9 inches	4 ft.	1.60	3.50	6.50
Pyramidal Arbor-Vitae. 9 to 12 inches	18 ft.	1.60	3.50	6.50
Dark Green American Arbor-Vitae. 15 to 18 in.	7 ft.	1.60	3.50	6.50
Woodward Globe Arbor-Vitae. 10 to 12 in.	3 ft.	1.60	3.50	6.50
Oriental Arbor-Vitae. 15 to 18 inches	12 ft.	1.60	3.50	6.50
Siberian Arbor-Vitae. (Not pictured.) 10 to 12 in.	12 ft.	1.60	3.50	6.50

## A COLE SUPER SPECIAL

### MAKE UP YOUR OWN EVERGREEN COLLECTION

10 plants, your choice of varieties, at double the price for 5.  
20 plants, your choice of varieties, at double the price for 10.  
You may select the kind of plants you want and the number of each kind you want and may even order one each of all varieties at these special rates.

### SPECIAL OFFER CATAWBA RHODODENDRONS

#### Beautiful Lavender-Pink Blooms

Healthy plants, 12 inches, grow to 5 feet: \$1.60 for 2; \$3.50 for 5; \$6.50 for 10.

### NEW SILVER-BLUE PFITZER JUNIPER

(Plant Patent Pending)

The outstanding Evergreen introduction of recent years. Broadly compact plants are an intense silver-blue color that attracts attention even when placed among other blue-colored Evergreens. The same shadings are retained throughout the winter. Use it in foundation planting or as a lovely sheared specimen. Trim it to formal shape, or allow it to grow naturally in its informal, but compact shape. Perfectly hardy; will thrive in light shade. Here is a plant long needed.

Cole offers a limited quantity of husky, 10- to 12-inch plants, carefully packed for successful transplanting. \$2.00 each; \$5.50 for 3.



DARK GREEN AMERICAN  
ARBOR-VITAE

PYRAMIDAL  
ARBOR-VITAE

ORIENTAL  
ARBOR-VITAE

IRISH  
JUNIPER

HICKS'  
YEWE

(Not  
Available)

WOODWARD  
GLOBE ARBOR-VITAE

PFITZER  
JUNIPER



# PHLOX ~ PHLOX ~ PHLOX

For 1946 we offer the finest collection of Hardy Phlox obtainable anywhere. Here is "the most useful of all perennial plants" at its best. For several years we have been rebuilding our Phlox collection, trying to select only those that have the most merit as to flower coloring, foliage quality, resistance to diseases and pests, and general good growing habits. Some of those chosen are new and some trusty old favorites. Each is without peer in its color group. For your convenience we have arranged them in color groups. Mass plantings of 10 or more of a color produce a brilliant display; a constant source of pleasure during their long blooming season. We offer strong field-grown plants sure to bloom this year. Plant 18 inches apart in good garden soil. Well-rotted cow manure will intensify colorings.

## RED

**Charles Curtis.** One of the most brilliant Phlox known. We think that sunset-red will come nearest to describing the color. It is a fine, strong grower, reaching a height of about 2½ feet. Heads are heavy and large and the florets are of a clear, sparkling, unfading color. Foliage is heavy and most attractive. 60c each; \$1.50 for 3; \$4.50 for 10.

**Leo Schlageter.** Its brilliant, scarlet blossoms seem to glow with fire. This is, without doubt, one of the finest brilliant red Phlox of all. Rich, full flower heads are borne on 3-foot stems. This is without peer among Phlox. 60c each; \$1.50 for 3; \$4.50 for 10.

**July Lights.** A lovely carmine floret, with blood-red eye, in great profusion in great panicles on 2½-foot sturdy stems. Altogether an outstanding red. 50c each; \$1.35 for 3; \$4.00 for 10.

## WHITE

**Mary Louise.** Unusually large heads of large florets of the translucent white of Carrara marble. The individual florets are twice the size of the usual white Phlox. Excellent, upright growing habit and beautiful clean foliage and along with it prolific blooming quality, make this probably the finest of the white Phlox. 1½ feet. Excellent for cutting. 60c each; \$1.50 for 3; \$4.50 for 10.

**Miss Lingard.** Another one of the fine white Phlox. It is constantly in bloom, usually until October. Large flower heads with occasional pink shading are most attractive. It is a slightly different family than the others and has a different type of foliage. Grows to a height of about 15 inches. Is never affected by any diseases or pests. 50c each; \$1.35 for 3; \$4.00 for 10.

**Prime Minister.** An excellent companion for Mary Louise. This lovely white Phlox, which somewhat resembles Mary Louise, is set off with an attractive vermilion eye. Of excellent growth habits and medium height, with fine foliage. 50c each; \$1.35 for 3; \$4.00 for 10.

## PINK AND SALMON-PINK

**Lillian.** One of the newest and, we think, without doubt, the finest pink Phlox grown anywhere. The florets have a lovely cameo-pink color with very delicate and occasional lavender shadings toward the center and throat. The panicles are large and the foliage is good, clean, and disease-resistant. A great bloomer and a "must" in any Phlox collection. 50c each; \$1.35 for 3; \$4.00 for 10.

**Annie Laurie.** A garden favorite with mammoth trusses of large, rich deep salmon florets. The glowing flowers, on sturdy 2½-ft. stems, make it an excellent subject for the border or for mass planting. 50c each; \$1.35 for 3; \$4.00 for 10.

**Painted Lady.** One of the taller growing varieties, approximately 3 feet tall, bearing a multitude of pleasing blooms of a silvery pink with salmon shadings and a cherry-red eye. Outstanding in its color class. 60c each; \$1.50 for 3; \$4.50 for 10.

**Salmon Beauty.** A rich, salmon-pink with a white eye. While there are a number of Phlox that answer this description, we believe that Salmon Beauty is the most outstanding of all varieties in its shade. The plant is sturdy and upright growing. 65c each; \$1.65 for 3; \$5.00 for 10.

## BLUE SHADES

**Blue Boy.** So named for the glorious blue shadings in this lovely soft magenta Phlox. The individual florets are large and borne in good sized clusters. Plants broadly upright to a height of 1½ to 2 feet and the excellent feathery foliage, combined with the unique coloring, makes a most useful and needed Phlox in the garden and in bouquets. 60c each; \$1.50 for 3; \$4.50 for 10.

## LAVENDER

**Caroline Vandenburg.** This lavender Phlox carries none of the magenta shades usually found in the lavender shades of Phlox. The large individual florets are carried in large clusters on erect, sturdy stems. The most attractive of the lavender Phlox and a real addition to your garden. 60c each; \$1.50 for 3; \$4.50 for 10.

## PURPLE

**Royal Purple.** This gloriously outstanding Phlox has no equal in its type. The rich, violet-shaded florets are set off by an eye of a much deeper shade of the same color. The rich coloring of this Phlox, as well as its elegant foliage and good growth habits, make it a necessity in any Phlox planting. You will want several of these. 60c each; \$1.50 for 3; \$4.50 for 10.

Marie Louise

Annie Laurie

Charles Curtis

Leo Schlageter

Royal Purple

### A COLE SUPER SPECIAL

1 Each of the 6 Phlox Pictured  
On This Page.

Value \$3.50 Special \$2.85

### A COLE SUPER SPECIAL

1 Each 13 Varieties of Phlox  
Listed On This Page.

Value \$7.40 Special \$6.00

Caroline Vandenburg →